

B7550002 INDORE

This Indian print on a cotton linen blend is made up of very spectacular rosettes inspired by a 19th century document.

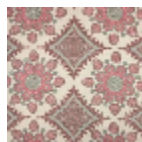
B7550002 - Nattier



Braquenié

TYPE	Prints
USE	Curtain
COMPOSITION	52 % Linen - 48 % Cotton
SALES UNIT	Available per meter/yard
WIDTH	140 cm / 55,11 inch
REPEAT	V: 54 cm - 21,25 inch
WEIGHT	343 gr / ml
CARE	
NOTES	Made in France (EPV Living Heritage Mill)

2 Colors



B7550002
Nattier



B7550003
Bleu ancien