

## B7553003 COCHINCHINE

This design, inspired by Jean Pillement, the "Queen's painter" from the 18th century who was one of the main representatives of the rococo movement in Europe, is a chinoiserie printed on chintz cotton percale in soft and refined shades, with small characters in oriental dress strolling in the middle of a Chinese garden.

### B7553003 - Brun de tolede



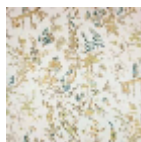
### Braquenié

<b>TYPE</b>	Prints
<b>USE</b>	Curtain
<b>COMPOSITION</b>	100 % Cotton
<b>SALES UNIT</b>	Available per meter/yard
<b>WIDTH</b>	145 cm / 57,08 inch
<b>REPEAT</b>	V: 87 cm - 34,25 inch Half drop repeat
<b>WEIGHT</b>	226 gr / ml
<b>CARE</b>	

## 4 Colors



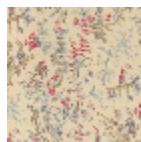
B7553001  
Gris bleu



B7553002  
Vert persan



B7553003  
Brun de toledo



B7553004  
Nattier