

## B7561001 COROMANDEL - BRODERIE

Very beautiful Persian motif embroidered on linen using a famous drawing from our collection. The original motif is a Jovacian production printed using a plank of wood around 1790, inspired by Indians.

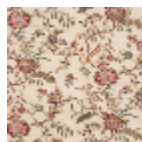
### B7561001 - Fond crème



### Braquenié

<b>TYPE</b>	Embroideries
<b>USE</b>	Curtain
<b>COMPOSITION</b>	62 % Linen - 38 % Viscose
<b>SALES UNIT</b>	Available per meter/yard
<b>WIDTH</b>	128 cm / 50,39 inch
<b>REPEAT</b>	H: 65 cm - 25,59 inch V: 78 cm - 30,70 inch
<b>WEIGHT</b>	540 gr / ml
<b>CARE</b>	

# 1 Colors



B7561001  
Fond crème