

## B7575001 BEAUMESNIL - BRODERIE

Very beautiful motif of sinuous branches with opulent flowers dating from the 19th century embroidered on a silk satin.

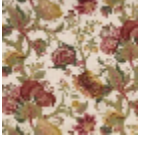
### B7575001 - Multicolore



### Braquenié

|                    |   |
|--------------------|---|
| <b>TYPE</b>        | -   |
| <b>USE</b>         | Curtain   |
| <b>COMPOSITION</b> | 53 % Viscose - 24 % Silk - 23 % Cotton          |
| <b>SALES UNIT</b>  | Available per meter/yard                        |
| <b>WIDTH</b>       | 129 cm / 50,78 inch                             |
| <b>REPEAT</b>      | H: 129 cm - 50,78 inch<br>V: 78 cm - 30,70 inch |
| <b>WEIGHT</b>      | 494 gr / ml                                     |
| <b>CARE</b>        |   |

# 1 Colors



B7575001  
Multicolore