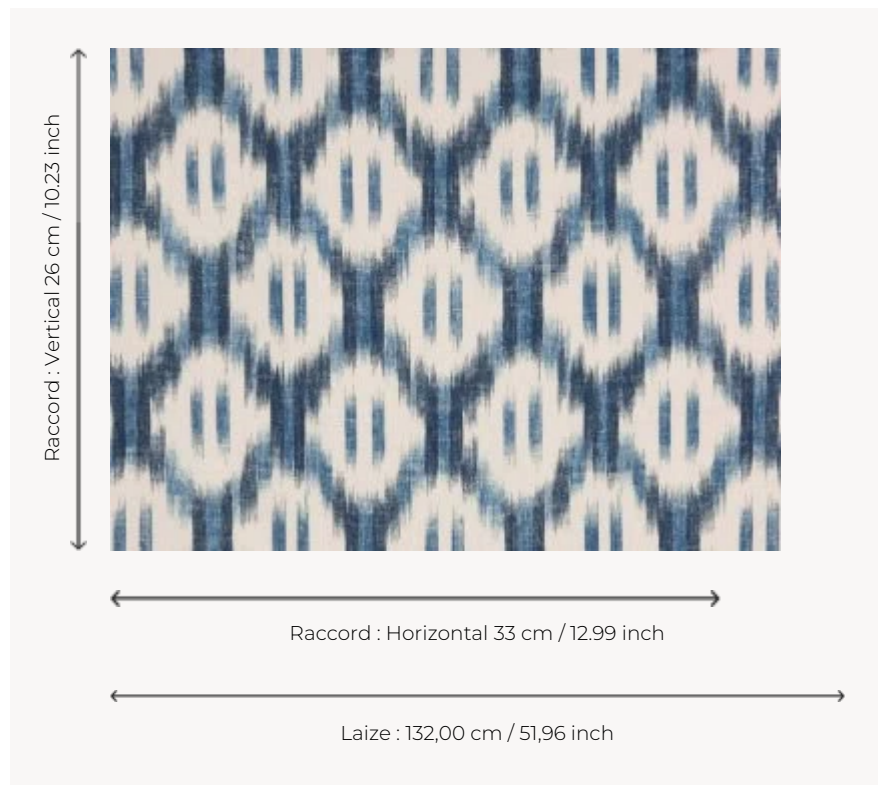


B7587001 LEANDRE

This print on linen reproduces a French 'chiné à la branche' from the 18th century with a geometric pattern.

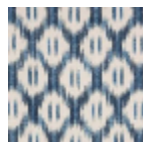
B7587001 - Indigo



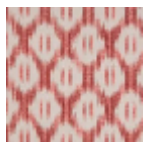
Braquenié

TYPE	Prints
COMPOSITION	100 % Linen
SALES UNIT	Available per meter/yard
WIDTH	132 cm / 51,96 inch
REPEAT	H: 33 cm - 12,99 inch V: 26 cm - 10,23 inch
WEIGHT	327 gr / ml
CARE	

3 Colors



B7587001
Indigo



B7587002
Garance



B7587004
Safran