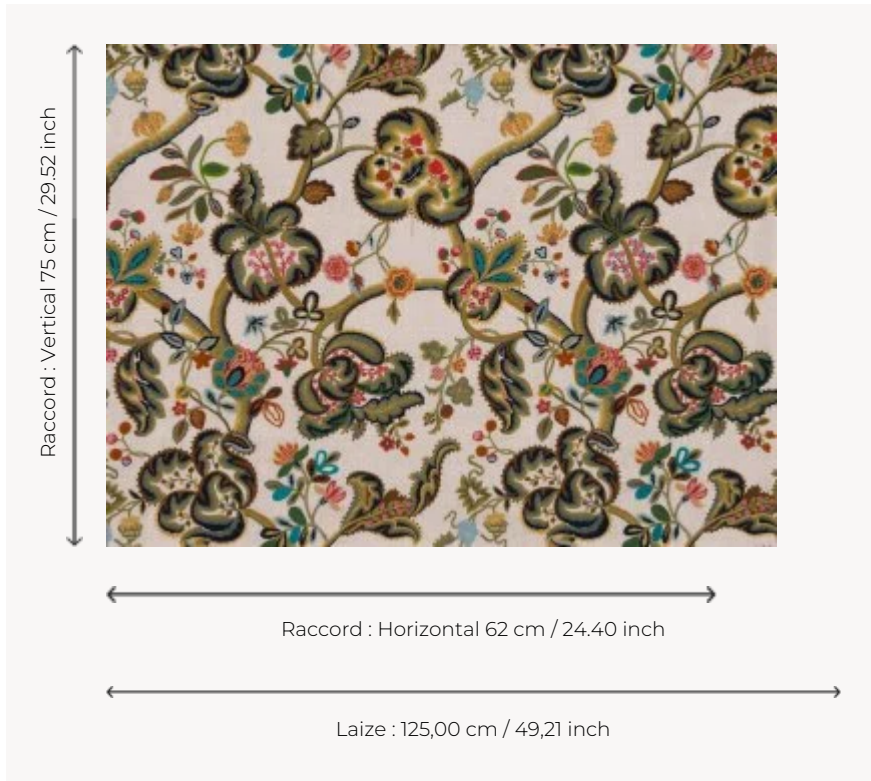


B7595001 LES COLONIES

A pattern of large sinuous flowering branches embroidered on a linen herringbone weave, typical of the second half of the 19th century, reminiscent of 18th century Indian palempores.

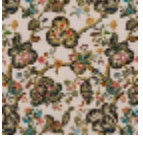
B7595001 - Multicolore



Braquenié

| | |
|--------------------|--|
| TYPE | Embroideries |
| COMPOSITION | 56 % Linen - 34 % Polyester - 10 % Acrylic |
| SALES UNIT | Available per meter/yard |
| WIDTH | 125 cm / 49,21 inch |
| REPEAT | H: 62 cm - 24,40 inch V: 75 cm - 29,52 inch |
| WEIGHT | 600 gr / ml |
| CARE | |

1 Colors



B7595001
Multicolore