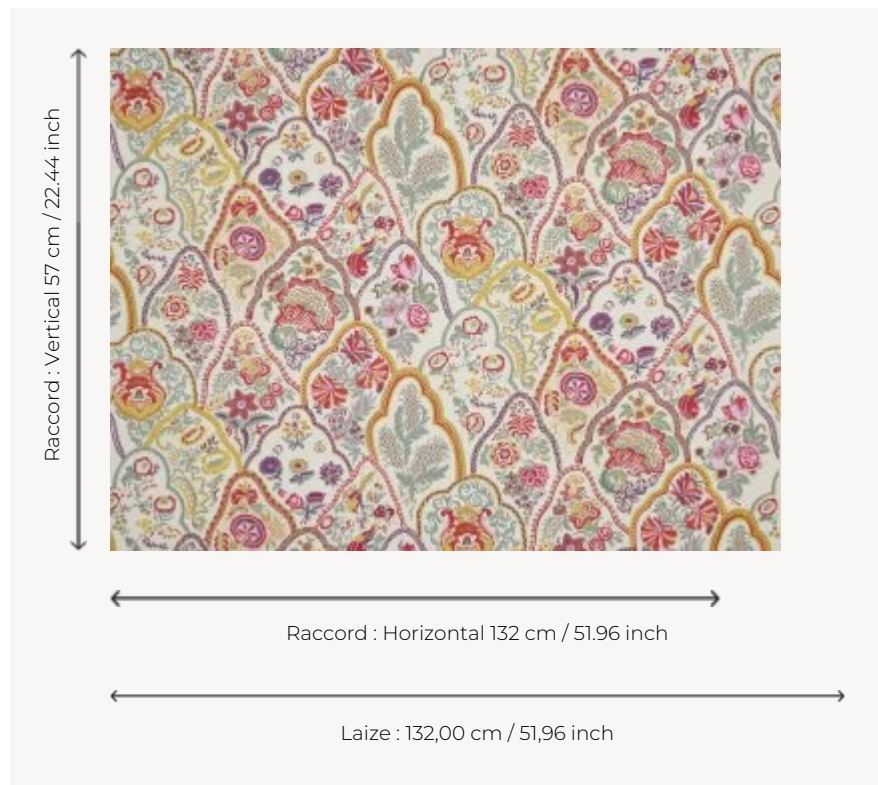


B7620001 AHMEDABAD

A closely intertwined pattern of embroidered scales set on a linen canvas. The motif draws its inspiration from 18th century Indian tree knolls.

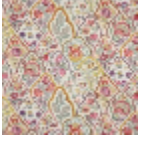
B7620001 - Botanica



Braquenié

TYPE	Embroideries
USE	Curtain
COMPOSITION	75 % Linen - 25 % Viscose
SALES UNIT	Available per meter/yard
WIDTH	132 cm / 51,96 inch
REPEAT	H: 132 cm - 51,96 inch V: 57 cm - 22,44 inch Straight repeat
WEIGHT	633 gr / ml
CARE	
BOOK	B99791904

1 Colors



B7620001
Botanica