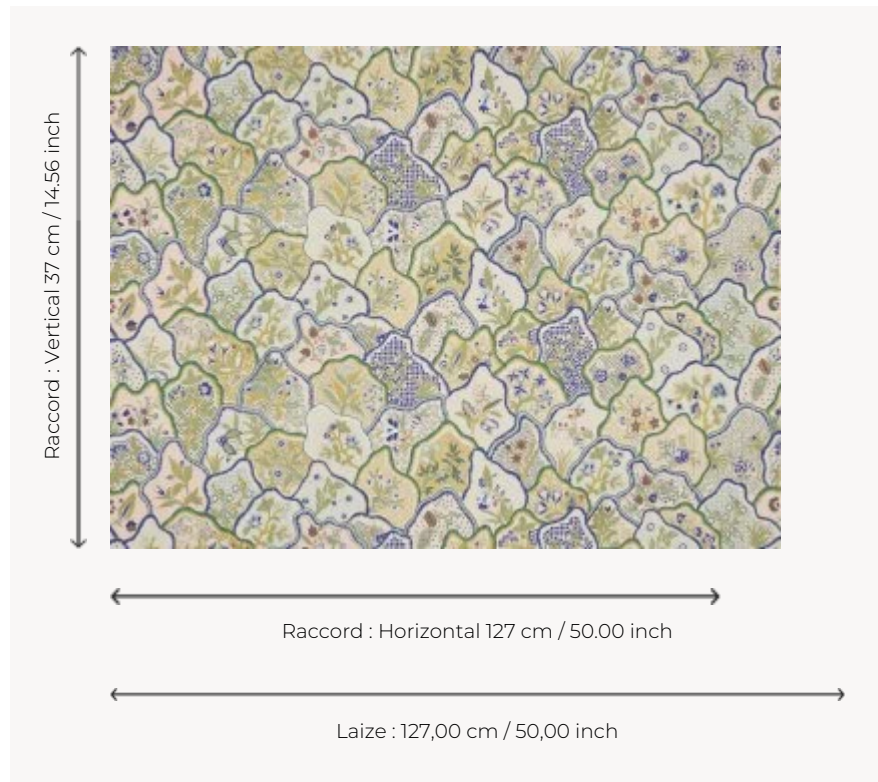


B7624001 LES FLEURS DU BENGALE

Inspired by an emblematic 19th century printed Braquenié fabric known as "Toiles des Indes", this embroidered linen mirrors the traditional composition with its intertwined scales and flowered pattern.

B7624001 - Mistral



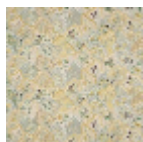
Braquenié

TYPE	Embroideries
USE	Curtain
COMPOSITION	63 % Linen - 37 % Viscose
SALES UNIT	Available per meter/yard
WIDTH	127 cm / 50,00 inch
REPEAT	H: 127 cm - 50,00 inch V: 37 cm - 14,56 inch Straight repeat
WEIGHT	622 gr / ml
CARE	
BOOK	B99791904

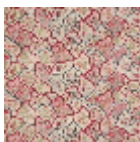
3 Colors



B7624001
Mistral



B7624002
Jonquille



B7624003
Garance