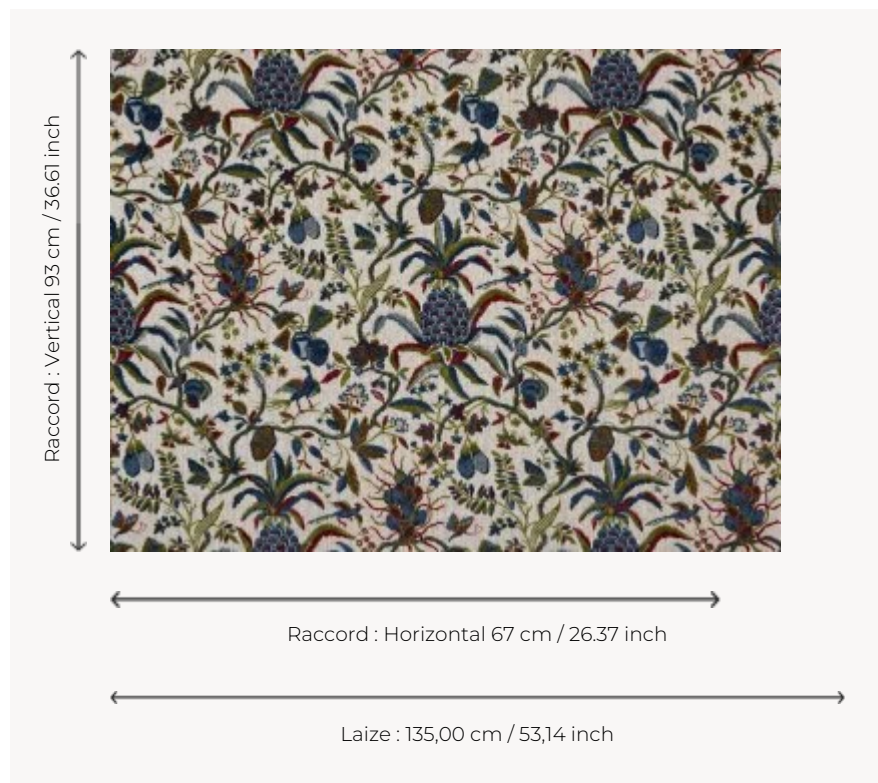


B7640003 ALIZON

Openwork velvet with a beautiful pattern of flowering branches and pineapple. It reproduces a textile from the Musée de la Toile de Jouy known as "Pineapple". Printed on a wooden board circa 1777, it was originally used for furniture.

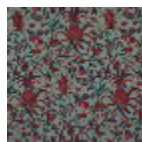
B7640003 - Epinard



Braquenié

PERFORMANCE	High Rub Test
TYPE	Epinglé velvets
USE	Moderate use
MARTINDALE	50.000 T
COMPOSITION	78 % Linen - 11 % Polyester - 11 % Cotton
SALES UNIT	Available per meter/yard
WIDTH	135 cm / 53,14 inch
REPEAT	H: 67 cm - 26,37 inch V: 93 cm - 36,61 inch Straight repeat
WEIGHT	1080 gr / ml
CARE	
CERTIFICATIONS	BS5852 Cigarette & match test in conjunction with suitable combustion modified foam
INFORMATION	pile 100% linen
BOOK	B99791902

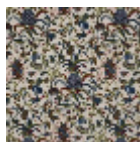
3 Colors



B7640001
Canard



B7640002
Colza



B7640003
Epinard