

## B7641001 ARISTOTE

Geometric épinglé velvet that evokes the fashionable motifs of the late 18th century.

### B7641001 - Caraibes



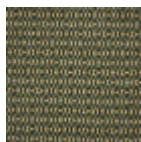
### Braquenié

<b>PERFORMANCE</b>	High Rub Test
<b>TYPE</b>	Epinglé velvets
<b>USE</b>	Intensive use
<b>MARTINDALE</b>	>100.000 T
<b>COMPOSITION</b>	91 % Cotton - 9 % Polyester
<b>SALES UNIT</b>	Available per meter/yard
<b>WIDTH</b>	136 cm / 53,54 inch
<b>REPEAT</b>	H: 8 cm - 3,14 inch V: 17 cm - 6,69 inch Straight repeat
<b>WEIGHT</b>	1060 gr / ml
<b>CARE</b>	
<b>CERTIFICATIONS</b>	BS5852 Cigarette & match test
<b>BOOK</b>	B99791902

### 3 Colors



B7641001  
Caraibes



B7641002  
Argile



B7641003  
Goyave