

B7657001 ASHOKA

Large tree of life embroidered on linen, ASHOKA evokes a lost paradise abounding in flowers and extraordinary foliage. The richness of its hand embroidery stitches and its tonal coloring give it a precious and unique style.

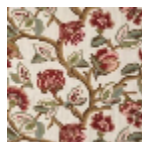
B7657001 - Vegetal



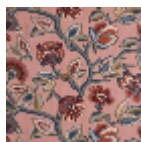
Braquenié

TYPE	Embroideries
COMPOSITION	67 % Acrylic - 33 % Linen
SALES UNIT	Available per meter/yard
WIDTH	128 cm / 50,39 inch
REPEAT	H: 124 cm - 48,81 inch V: 78 cm - 30,70 inch Straight repeat
WEIGHT	742 gr / ml
CARE	
NOTES	Handcrafted embroidery

2 Colors



B7657001
Vegetal



B7657002
Roseaie