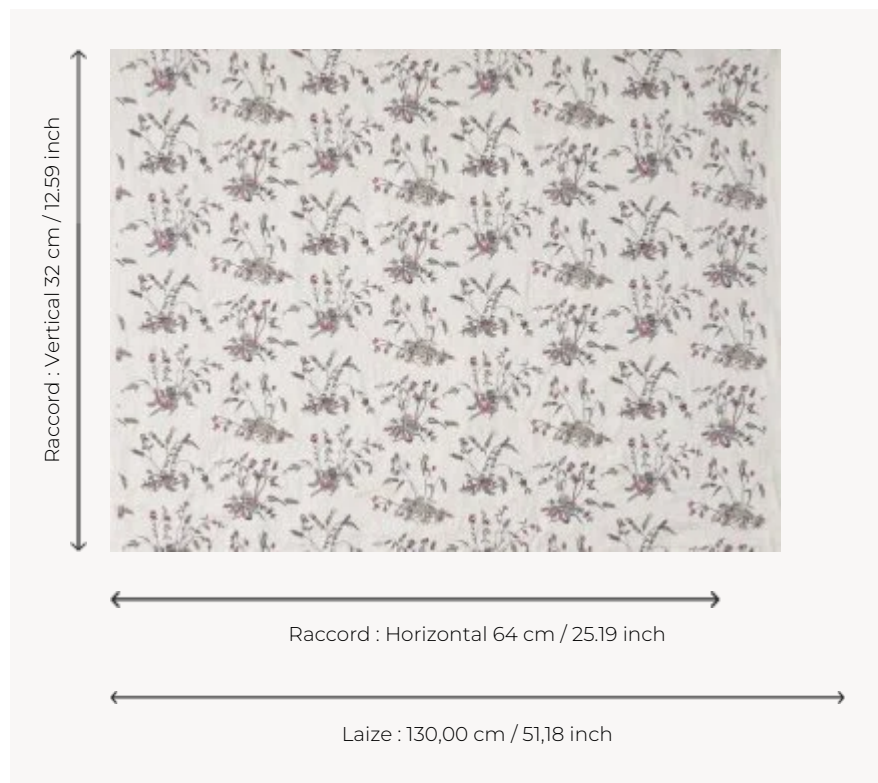


B7658001 AU JARDIN

This embroidery subtly and delicately evokes bouquets of fruits and flowers inspired by a block printed canvas produced in the 18th century in France, preserved in the Maison's patrimonial collection.

B7658001 - Celeste



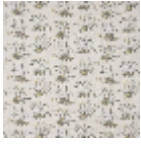
Braquenié

TYPE	Embroideries
COMPOSITION	71 % Linen - 20 % Viscose - 9 % Polyester
SALES UNIT	Available per meter/yard
WIDTH	130 cm / 51,18 inch
REPEAT	H: 64 cm - 25,19 inch V: 32 cm - 12,59 inch Straight repeat
WEIGHT	377 gr / ml
CARE	

2 Colors



B7658001
Celeste



B7658002
Or