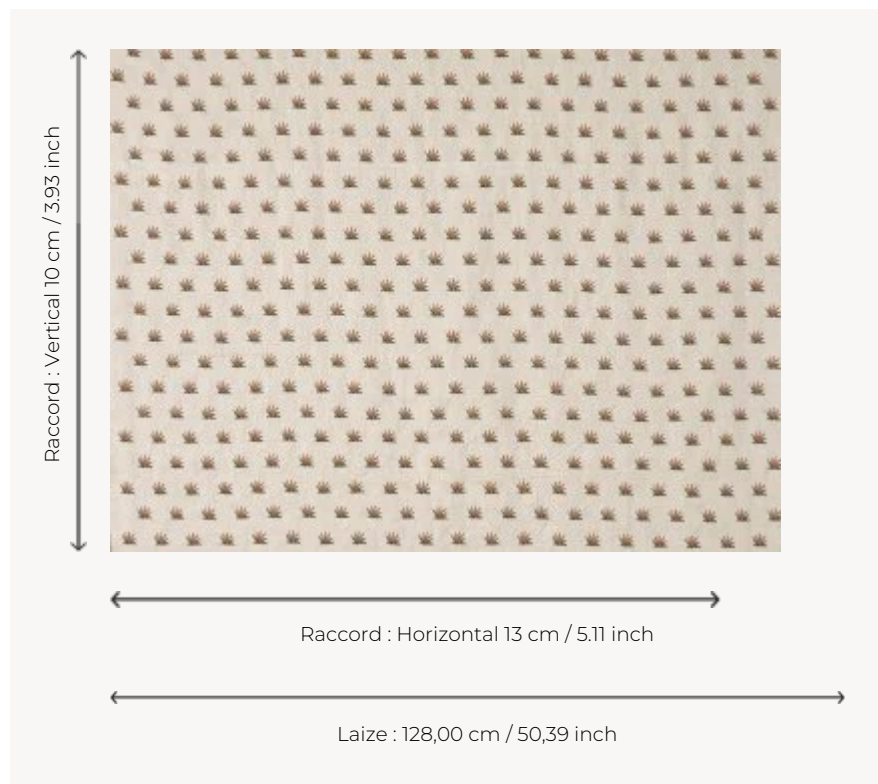


B7660002 COULONGES CONTREFOND

Inspired by 18th century Indian designs, this delicate sowing of exotic plants is finely embroidered on a magnificent linen twill. It is perfectly coordinated with the COULONGES B7659 fabric, as well as the wall covering of the same name. It reproduces a canvas printed in France with the block printing technique in the last quarter of the 18th century, preserved in the Maison's archives.

B7660002 - Mandarine



Braquenié

| | |
|--------------------|---|
| TYPE | Embroideries |
| COMPOSITION | 80 % Linen - 14 % Viscose - 6 % Polyester |
| SALES UNIT | Available per meter/yard |
| WIDTH | 128 cm / 50,39 inch |
| REPEAT | H: 13 cm - 5,11 inch V: 10 cm - 3,93 inch Straight repeat |
| WEIGHT | 320 gr / ml |
| CARE | |
| BOOK | B99791906 |

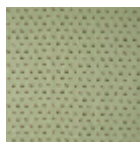
3 Colors



B7660001
Hortensia



B7660002
Mandarine



B7660003
Amandine