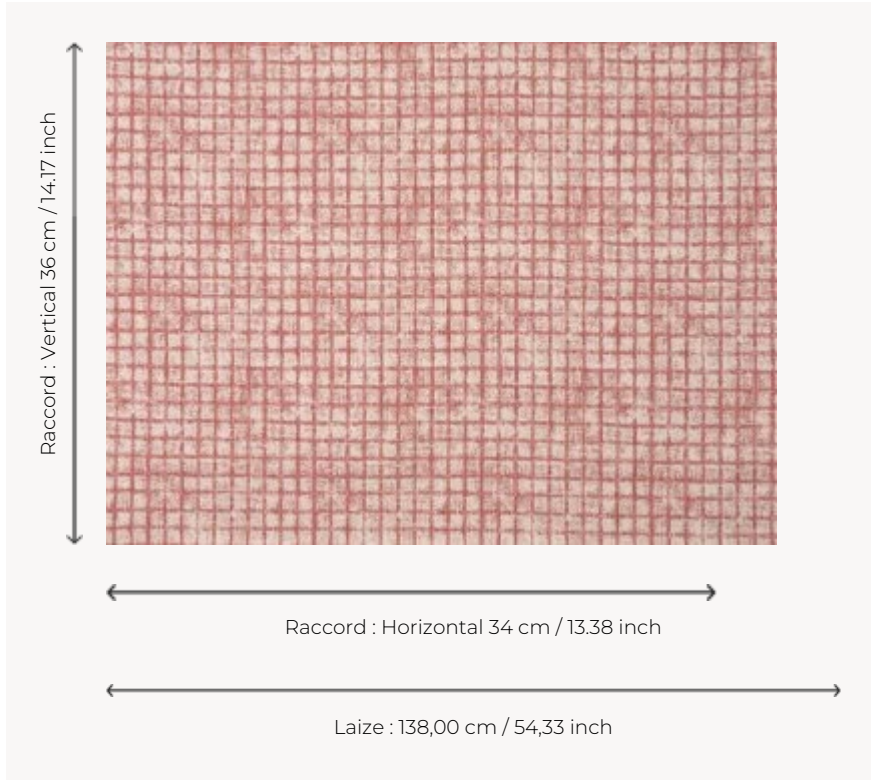


## B7664002 NEVILLE

A subtle evocation of the charm of fabrics with the patina of time, this textured matte plaid is particularly well suited to seatomg. Woven in Pierre Frey's workshops in the north of France, it can be used in positive and negative, thanks to the reversible nature of the fabric.

### B7664002 - Capucine



### Braquenié

<b>PERFORMANCE</b>	High Rub Test
<b>TYPE</b>	Jacquards
<b>USE</b>	Normal use
<b>MARTINDALE</b>	30.000 T
<b>COMPOSITION</b>	76 % Cotton - 24 % Linen
<b>SALES UNIT</b>	Available per meter/yard
<b>WIDTH</b>	138 cm / 54,33 inch
<b>REPEAT</b>	H: 34 cm - 13,38 inch V: 36 cm - 14,17 inch Straight repeat
<b>WEIGHT</b>	703 gr / ml
<b>CARE</b>	

<b>NOTES</b>	<p>Reversible Made in France (EPV Living Heritage Mill) Woven in Pierre Frey's workshop in northern France. Living Heritage Mill.</p>
--------------	---

<b>BOOK</b>	B99791907
-------------	-----------

## 4 Colors



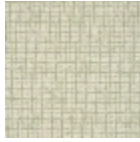
B7664001  
Gres



B7664002  
Capucine



B7664003  
Ceruleen



B7664004  
Amande