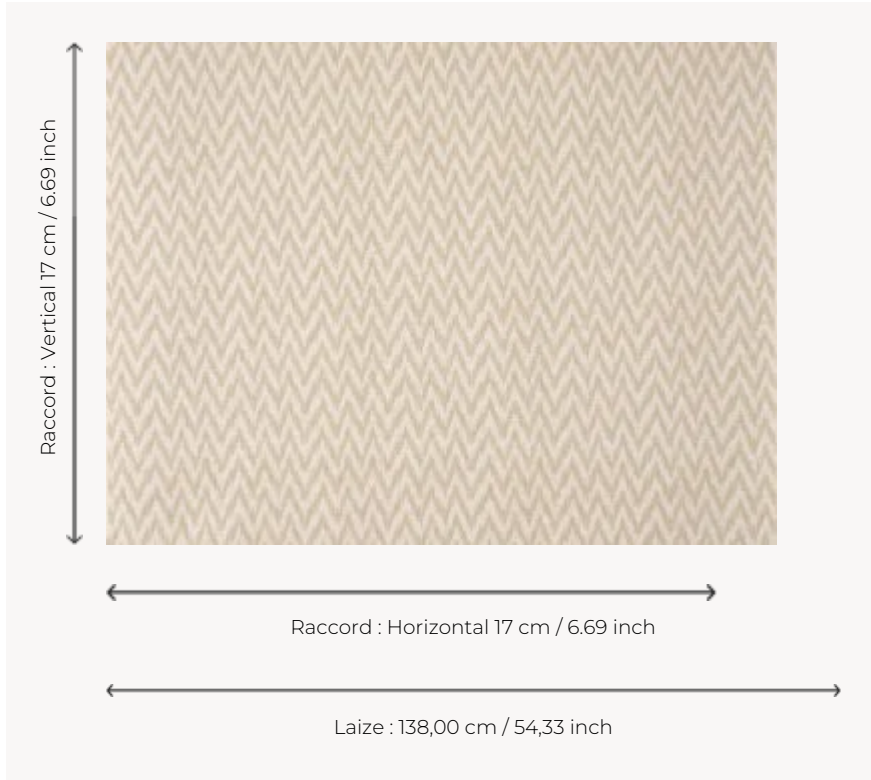


B7665001 BRIONNE

Subtle evocation of 18th century flame-stitch fabrics, often used to make the "bonnes grâces" of canopy beds. This textured and matte herringbone is particularly well suited for seating. It is woven in Pierre Frey's workshops in northern France.

B7665001 - Sable



Braquenié

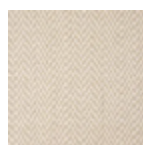
TYPE	Jacquards
USE	Normal use
MARTINDALE	18.000 T
COMPOSITION	76 % Cotton - 24 % Linen
SALES UNIT	Available per meter/yard
WIDTH	138 cm / 54,33 inch
REPEAT	H: 17 cm - 6,69 inch V: 17 cm - 6,69 inch Straight repeat
WEIGHT	690 gr / ml

CARE 

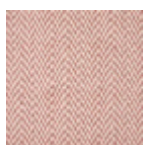
NOTES Made in France (EPV Living Heritage Mill)
Woven in Pierre Frey's workshop in northern France. Living Heritage Mill.

BOOK B99791907

4 Colors



B7665001
Sable



B7665002
Corail



B7665003
Amethyste



B7665004
Prairie