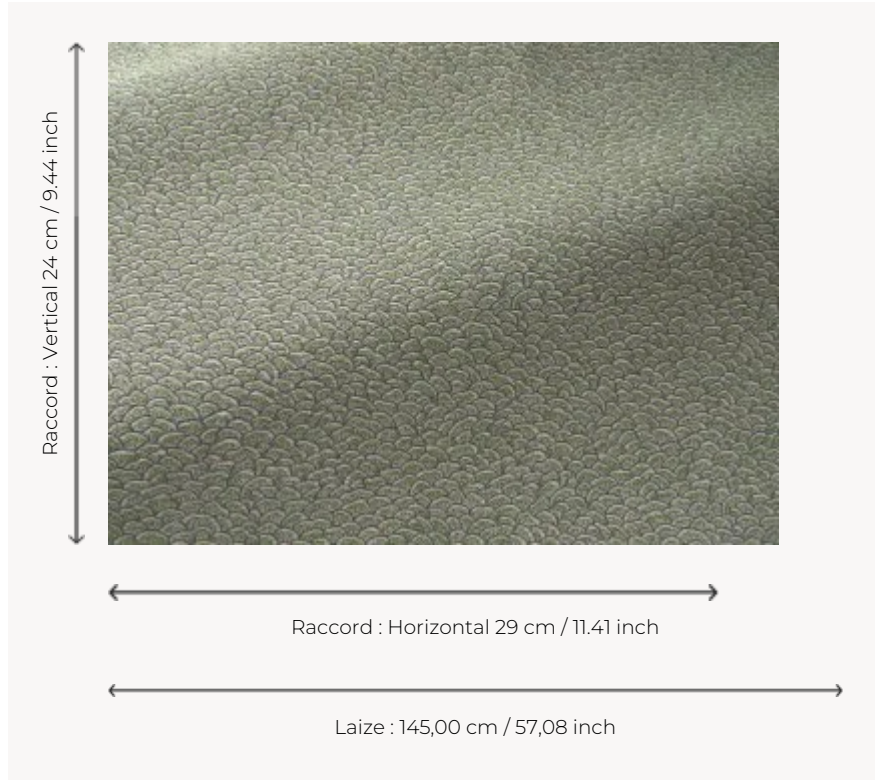


B7673002 CERILLY

Small scale pattern whose thread crossings allow for subtle plays of colorations, CERILLY is a remarkable jacquard with its beautiful linen weave and its soft, delicate shades coordinated with all the articles of the Maison.

B7673002 - Jardinet



Braquenié

TYPE	Jacquards
USE	Normal use
MARTINDALE	20.000 T
COMPOSITION	39 % Polyamide - 34 % Linen - 27 % Cotton
SALES UNIT	Available per meter/yard
WIDTH	145 cm / 57,08 inch
REPEAT	H: 29 cm - 11,41 inch V: 24 cm - 9,44 inch Straight repeat
WEIGHT	580 gr / ml
CARE	
CERTIFICATIONS	NFPA 260-Class 1
BOOK	B99791907

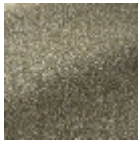
9 Colors



B7673001
Pastel



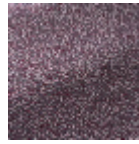
B7673002
Jardinet



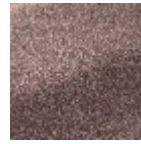
B7673003
Etang



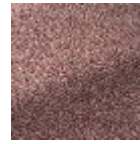
B7673004
Fontaine



B7673005
Blason



B7673006
Prunier



B7673007
Cerisier



B7673008
Fraise des bois



B7673009
Coing