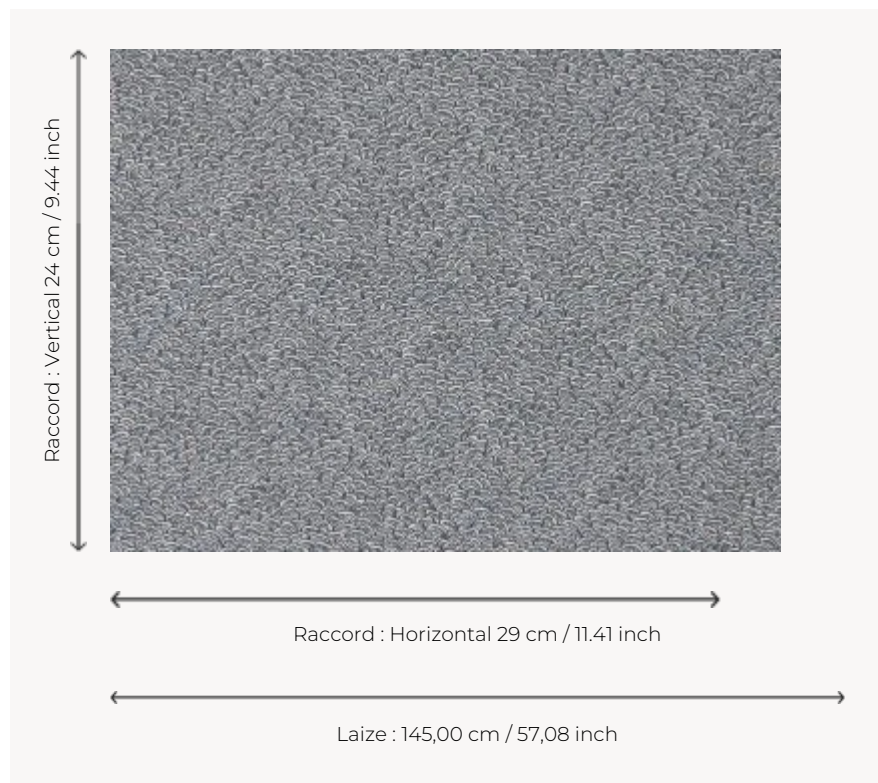


B7673004 CERILLY

Small scale pattern whose thread crossings allow for subtle plays of colorations, CERILLY is a remarkable jacquard with its beautiful linen weave and its soft, delicate shades coordinated with all the articles of the Maison.

B7673004 - Fontaine



Braquenié

| | |
|-----------------------|--|
| TYPE | Jacquards |
| USE | Normal use |
| MARTINDALE | 20.000 T |
| COMPOSITION | 39 % Polyamide - 34 % Linen - 27 % Cotton |
| SALES UNIT | Available per meter/yard |
| WIDTH | 145 cm / 57,08 inch |
| REPEAT | H: 29 cm - 11,41 inch V: 24 cm - 9,44 inch Straight repeat |
| WEIGHT | 580 gr / ml |
| CARE | |
| CERTIFICATIONS | NFPA 260-Class 1 |
| BOOK | B99791907 |

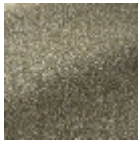
9 Colors



B7673001
Pastel



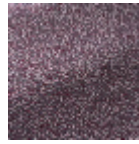
B7673002
Jardinet



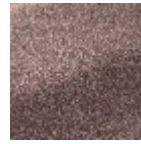
B7673003
Etang



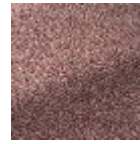
B7673004
Fontaine



B7673005
Blason



B7673006
Prunier



B7673007
Cerisier



B7673008
Fraise des bois



B7673009
Coing