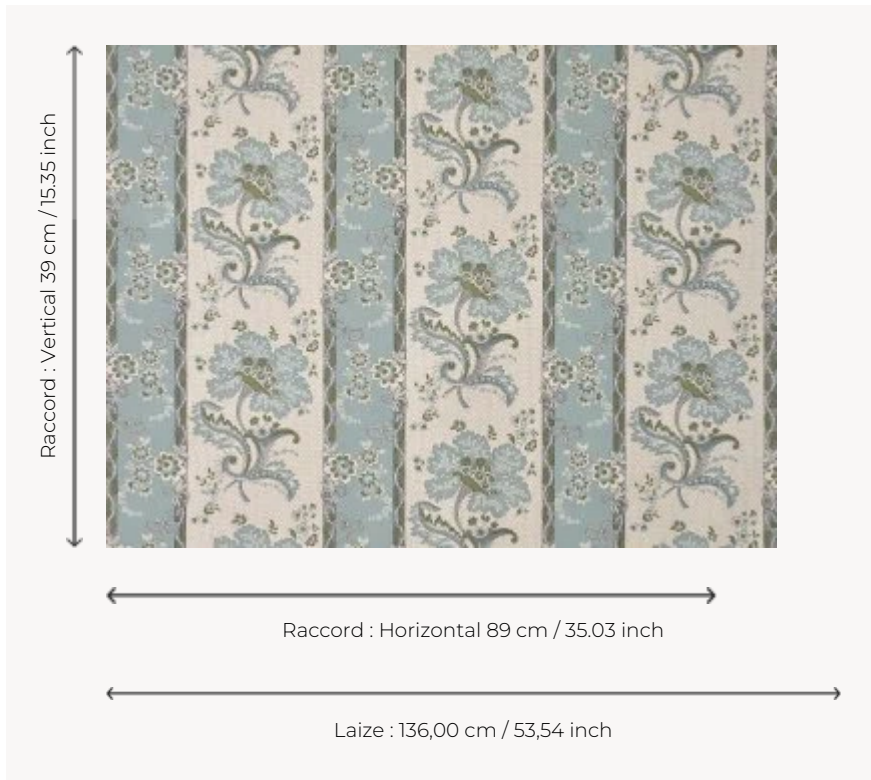


## B7682002 AMBOISE

Reproduction of « La corne fleurie » pattern, one of Beautiran's best known motifs, printed with the block printing technique at the Leclerc & fils factory in the late 18th century. The document, preserved in the Maison's archives, is a padded and quilted part of a bed à la duchesse. This charming stripe of flowers and ribbons is here flat screen printed in France, on a timeless metis support.

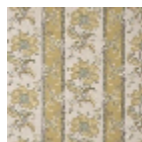
### B7682002 - Ciel



### Braquenié

<b>TYPE</b>	Prints
<b>COMPOSITION</b>	70 % Linen - 30 % Cotton
<b>SALES UNIT</b>	Available per meter/yard
<b>WIDTH</b>	136 cm / 53,54 inch
<b>REPEAT</b>	H: 89 cm - 35,03 inch V: 39 cm - 15,35 inch Half drop repeat
<b>WEIGHT</b>	428 gr / ml
<b>CARE</b>	
<b>NOTES</b>	Made in France (EPV Living Heritage Mill)
<b>INFORMATION</b>	Flat screen printed

## 3 Colors



B7682001  
Ocre



B7682002  
Ciel



B7682003  
Garance