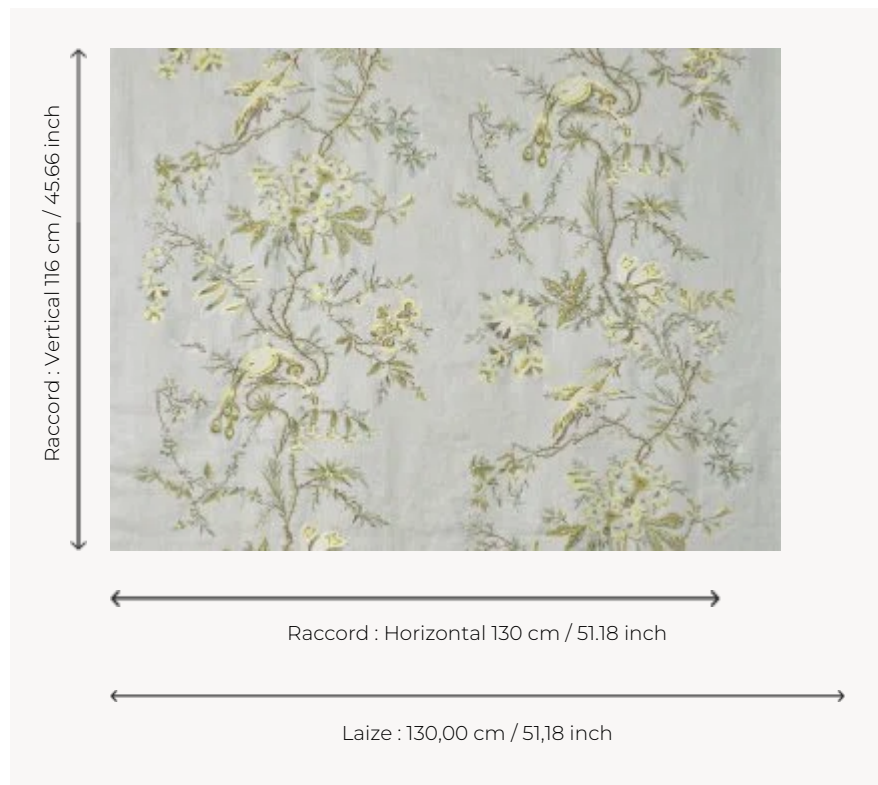


B7684001 PARVATI

Inspired by an 18th century screen covered with a wallpaper, this magnificent embroidery on linen displays a decoration of branches and birds in subtle and luminous colors. Also available in wallpaper.

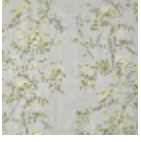
B7684001 - Menthe



Braquenié

TYPE	Embroideries
COMPOSITION	63 % Linen - 26 % Viscose - 11 % Polyester
SALES UNIT	Available per meter/yard
WIDTH	130 cm / 51,18 inch
REPEAT	H: 130 cm - 51,18 inch V: 116 cm - 45,66 inch Straight repeat
WEIGHT	416 gr / ml
CARE	

1 Colors



B7684001
Menthe