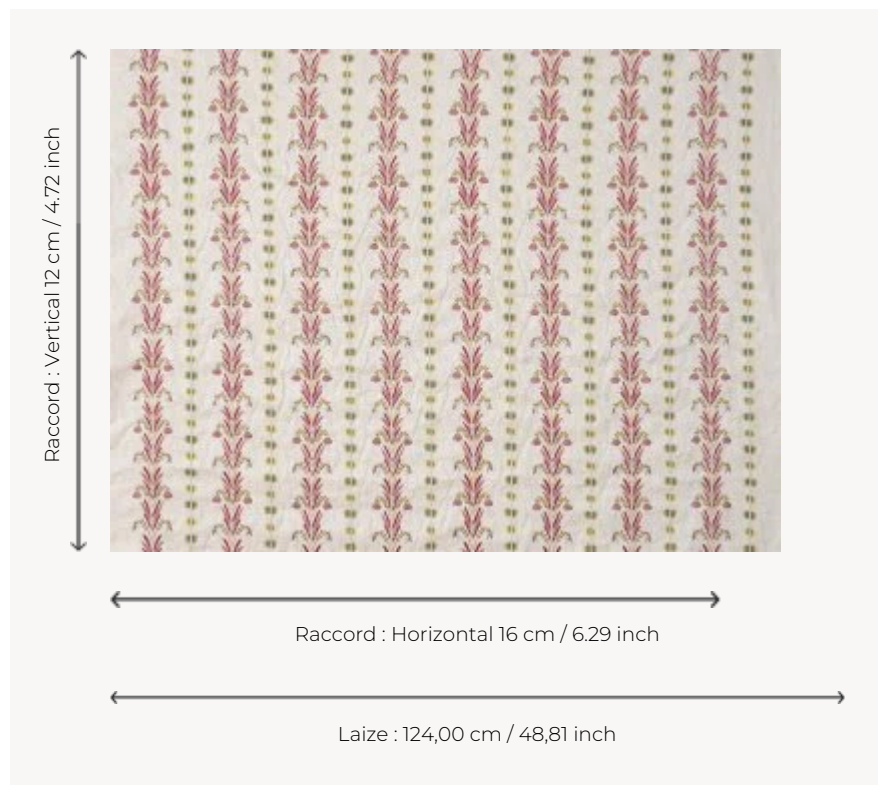


## B7685001 L'ELEGANT

Remarkable for its finesse, this delicate stripe of flowers and leaves embroidered on linen reinterprets the decoration of a charming embroidered vest from the late 18th century, preserved in the Maison's archives.

### B7685001 - Original



### Braquenié

<b>TYPE</b>	Embroideries
<b>COMPOSITION</b>	68 % Linen - 23 % Viscose - 9 % Polyester
<b>SALES UNIT</b>	Available per meter/yard
<b>WIDTH</b>	124 cm / 48,81 inch
<b>REPEAT</b>	H: 16 cm - 6,29 inch V: 12 cm - 4,72 inch Straight repeat
<b>WEIGHT</b>	396 gr / ml
<b>CARE</b>	

1 Colors



B7685001  
Original