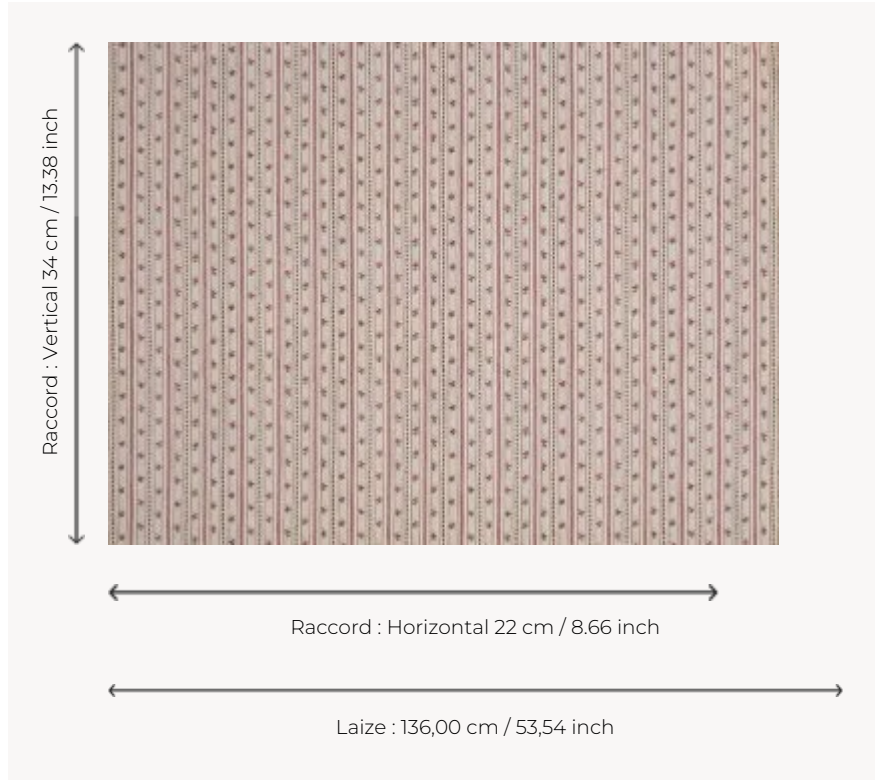


## B7686002 MONTBAZON

This charming floral stripe is typical of 18th century prints imitating chinés à la branche. The original textile, printed with the block printing technique at the end of the 18th century, preserved in the Maison's archives, was intended for fashion. It is declined in warm and timeless colors.

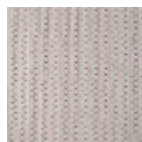
### B7686002 - Azalee



### Braquenié

<b>TYPE</b>	Prints
<b>COMPOSITION</b>	100 % Cotton
<b>SALES UNIT</b>	Available per meter/yard
<b>WIDTH</b>	136 cm / 53,54 inch
<b>REPEAT</b>	H: 22 cm - 8,66 inch V: 34 cm - 13,38 inch Straight repeat
<b>WEIGHT</b>	244 gr / ml
<b>CARE</b>	
<b>NOTES</b>	Made in France (EPV Living Heritage Mill)

## 2 Colors



B7686001  
Epices



B7686002  
Azalee