

F1878002 ALEXANDRIE

This drawing is representative of the Orientalist current of the Second Empire. Printed on cotton, it reproduces a gouache project of the second half of the 19th century preserved at the Musée de l'Impression Sur Etoffes in Mulhouse, France.

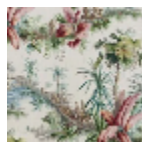
F1878002 - Fond bise mat



Pierre Frey

TYPE	Prints
COMPOSITION	100 % Cotton
SALES UNIT	Available per meter/yard
WIDTH	140 cm / 55,11 inch
REPEAT	H: 138 cm - 54,33 inch V: 121 cm - 47,63 inch
WEIGHT	280 gr / ml
CARE	
NOTES	Made in France (EPV Living Heritage Mill)

1 Colors



F1878002
Fond bise mat