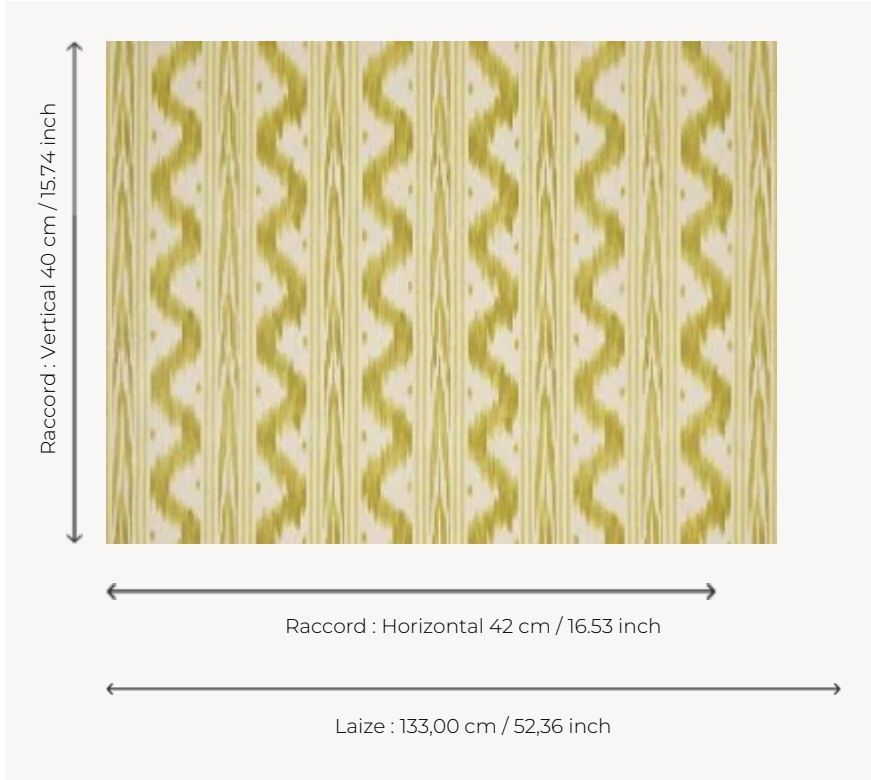


## F1977013 TOILE DE NANTES

Stipple or ikat Toile de Nantes from the second half of the 18th century, generally used to decorate tester beds.

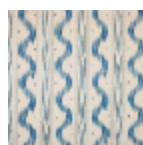
### F1977013 - Absinthe



### Pierre Frey

<b>TYPE</b>	Prints
<b>COMPOSITION</b>	100 % Cotton
<b>SALES UNIT</b>	Available per meter/yard
<b>WIDTH</b>	133 cm / 52,36 inch
<b>REPEAT</b>	H: 42 cm - 16,53 inch V: 40 cm - 15,74 inch Straight repeat
<b>WEIGHT</b>	226 gr / m <sup>2</sup>
<b>CARE</b>	
<b>NOTES</b>	Washable fabric Made in France (EPV Living Heritage Mill)
<b>INFORMATION</b>	Flat screen printed

## 7 Colors



F1977001  
Bleu ancien



F1977011  
Sanguine



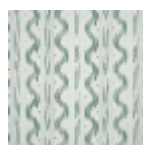
F1977012  
Cannelle



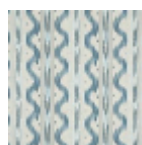
F1977013  
Absinthe



F1977014  
Herbe



F1977015  
Celadon



F1977016  
Ocean