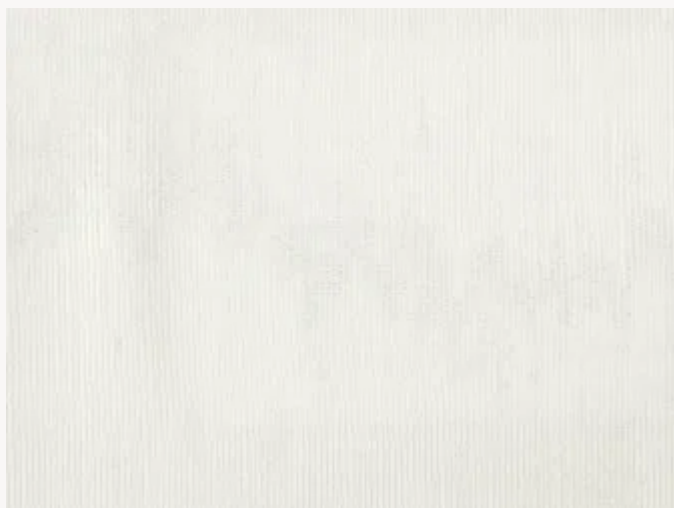




F2230033 MOIRE PRINCESSE II

The moire, classic and elegant material par excellence, is the result of crushing a wet and folded fabric by calendering. The crushed weft is slightly altered and gives an undulating effect by reflection of light on the crushed sides. Several effects are possible depending on how the fabric is folded.

F2230033 - Écru

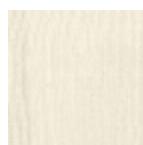


Laize : 145,00 cm / 57,08 inch

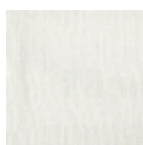
Pierre Frey

| | |
|--------------------|---|
| TYPE | Plains |
| COMPOSITION | 41 % Cotton - 27 % Linen - 18 % Viscose - 14 % Polyester |
| SALES UNIT | Available per meter/yard |
| WIDTH | 145 cm / 57,08 inch |
| WEIGHT | 379 gr / ml |
| CARE | |
| NOTES | Can be embossed |

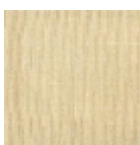
4 Colors



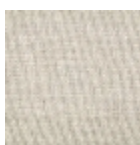
F2230005
Crème



F2230033
Écru



F2230212
Raphia



F2230264
Belette