

F2569003 PETIT PARC

Reproduction of a painted canvas from the Louis XVI period, showing a motif of birds and baskets of flowers in a network of knotted ribbons. The choice of a half-breed support and the trompe-l'oeil worn effects accentuate the similarity with the 18th century model painted on linen canvas.

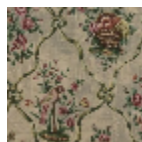
F2569003 - Vert



Pierre Frey

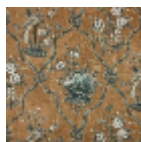
TYPE	Prints
COMPOSITION	53 % Cotton - 47 % Linen
SALES UNIT	Available per meter/yard
WIDTH	145 cm / 57,08 inch
REPEAT	V: 78 cm - 30,70 inch
WEIGHT	430 gr / ml
CARE	

2 Colors



F2569003

Vert



F2569004

Gris