



## F2628003 SHANGHAI

Subtle mix of cotton, linen, viscose and silk for this thick weave with a rich 'material' effect. It is designed for intensive use on seats. Deep colour range.

### F2628003 - Dune



Laize : 140,00 cm / 55,11 inch

### Pierre Frey

<b>PERFORMANCE</b>	High Rub Test
<b>TYPE</b>	Plains
<b>USE</b>	Intensive use
<b>MARTINDALE</b>	>100.000 T
<b>COMPOSITION</b>	56 % Viscose - 23 % Cotton - 15 % Linen - 6 % Silk
<b>SALES UNIT</b>	Available per meter/yard
<b>WIDTH</b>	140 cm / 55,11 inch
<b>WEIGHT</b>	1050 gr / ml
<b>CARE</b>	
<b>CERTIFICATIONS</b>	BS5852 Cigarette & match test EN1021-1-2 in conjunction with suitable combustion modified foam NFPA 260-Class 1

# 17 Colors



F2628001  
Nacre



F2628002  
Ivoire



F2628003  
Dune



F2628004  
Noisette



F2628007  
Lin



F2628008  
Granit



F2628009  
Noir



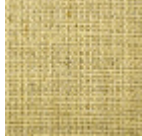
F2628012  
Corail



F2628013  
Rose



F2628014  
Orange



F2628015  
Citron



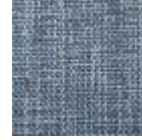
F2628017  
Mauve



F2628018  
Prairie



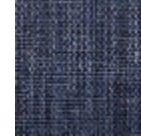
F2628019  
Emeraude



F2628020  
Azur



F2628021  
Bleuét



F2628022  
Marine