



F2628014 SHANGHAI

Subtle mix of cotton, linen, viscose and silk for this thick weave with a rich 'material' effect. It is designed for intensive use on seats. Deep colour range.

F2628014 - Orange



Laize : 140,00 cm / 55,11 inch

Pierre Frey

PERFORMANCE	High Rub Test
TYPE	Plains
USE	Intensive use
MARTINDALE	>100.000 T
COMPOSITION	56 % Viscose - 23 % Cotton - 15 % Linen - 6 % Silk
SALES UNIT	Available per meter/yard
WIDTH	140 cm / 55,11 inch
WEIGHT	1050 gr / ml
CARE	
CERTIFICATIONS	BS5852 Cigarette & match test EN1021-1-2 in conjunction with suitable combustion modified foam NFPA 260-Class 1

17 Colors



F2628001
Nacre



F2628002
Ivoire



F2628003
Dune



F2628004
Noisette



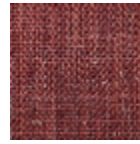
F2628007
Lin



F2628008
Granit



F2628009
Noir



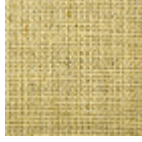
F2628012
Corail



F2628013
Rose



F2628014
Orange



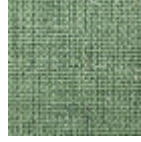
F2628015
Citron



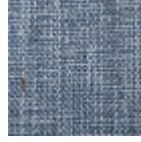
F2628017
Mauve



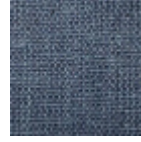
F2628018
Prairie



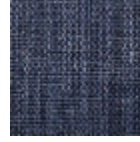
F2628019
Emeraude



F2628020
Azur



F2628021
Bleuét



F2628022
Marine