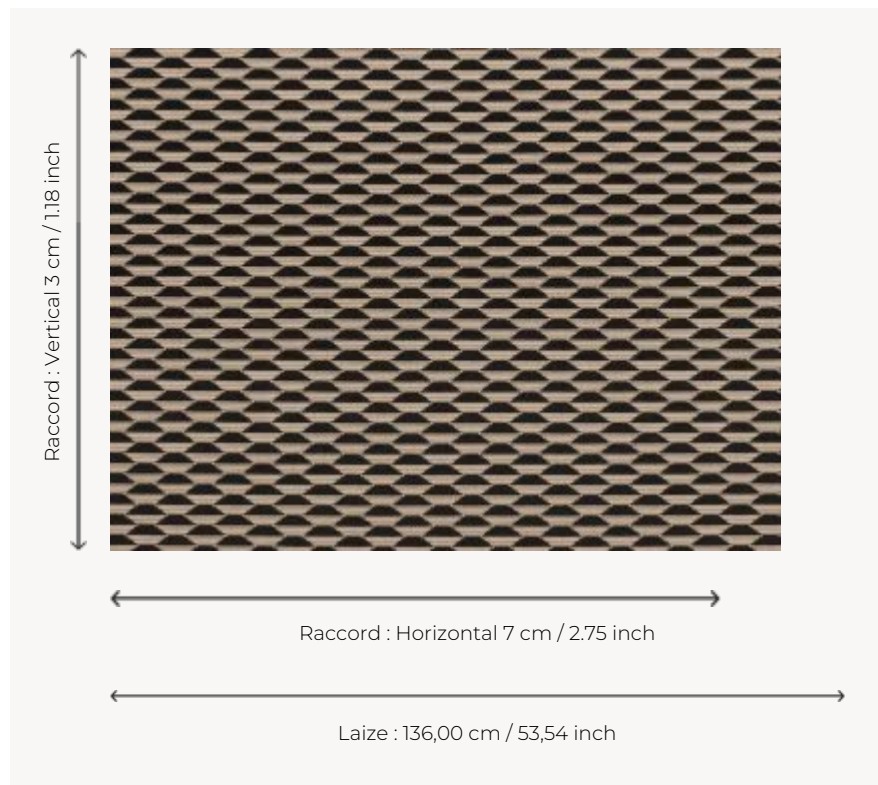


## F2798002 BAKOU

Epinglé velvet with quite a simple geometric motif. The range of colours give it an ethnic or contemporary appearance.

### F2798002 - Noir



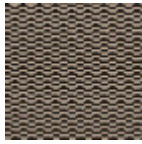
### Pierre Frey

<b>PERFORMANCE</b>	High Rub Test
<b>TYPE</b>	Epinglé velvets
<b>USE</b>	Intensive use
<b>MARTINDALE</b>	> 40.000 T
<b>COMPOSITION</b>	100 % Cotton
<b>SALES UNIT</b>	Available per meter/yard
<b>WIDTH</b>	136 cm / 53,54 inch
<b>REPEAT</b>	H: 7 cm - 2,75 inch V: 3 cm - 1,18 inch
<b>WEIGHT</b>	958 gr / ml
<b>CARE</b>	
<b>BOOK</b>	F9979212019 F99791106

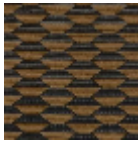
## 9 Colors



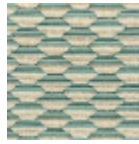
F2798001  
Naturel



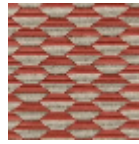
F2798002  
Noir



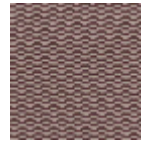
F2798003  
Moka



F2798005  
Céladon



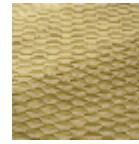
F2798006  
Rouge



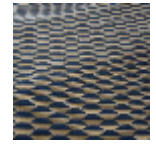
F2798007  
Prune



F2798008  
Or



F2798009  
Olive



F2798010  
Indigo