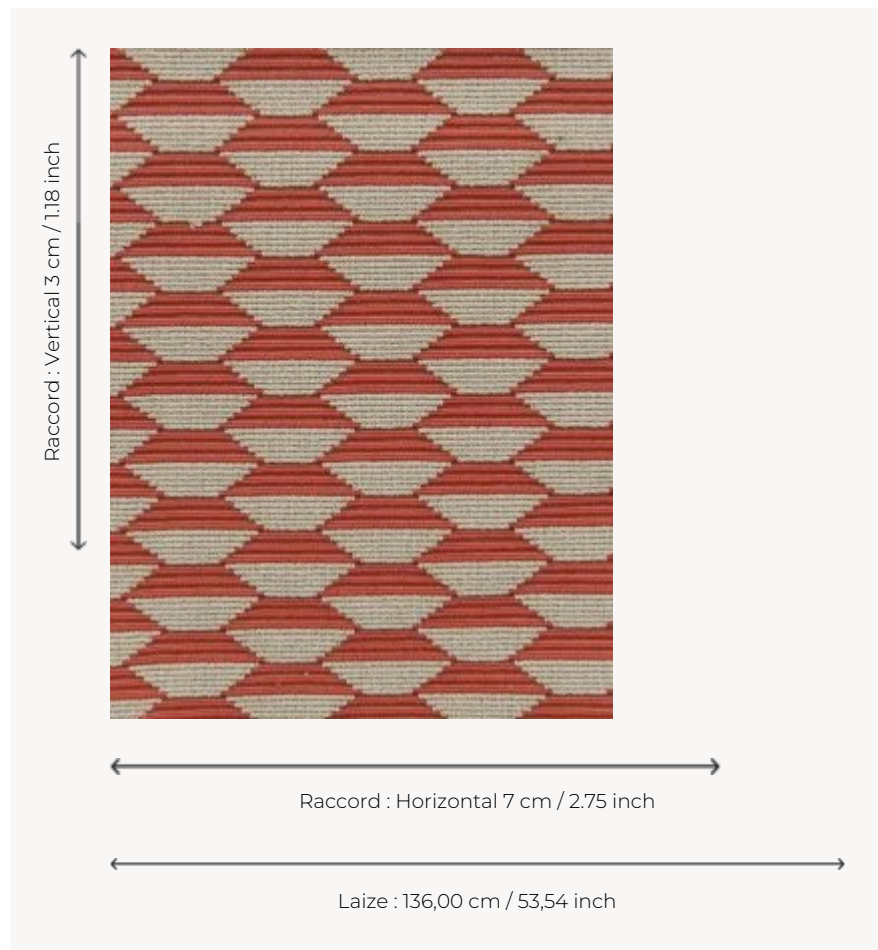


## F2798006 BAKOU

Epinglé velvet with quite a simple geometric motif. The range of colours give it an ethnic or contemporary appearance.

### F2798006 - Rouge



### Pierre Frey

|                    |  |
|--------------------|--|
| <b>PERFORMANCE</b> | High Rub Test                              |
| <b>TYPE</b>        | Epinglé velvets                            |
| <b>USE</b>         | Intensive use                              |
| <b>MARTINDALE</b>  | > 40.000 T                                 |
| <b>COMPOSITION</b> | 100 % Cotton                               |
| <b>SALES UNIT</b>  | Available per meter/yard                   |
| <b>WIDTH</b>       | 136 cm / 53,54 inch                        |
| <b>REPEAT</b>      | H: 7 cm - 2,75 inch<br>V: 3 cm - 1,18 inch |
| <b>WEIGHT</b>      | 958 gr / ml                                |
| <b>CARE</b>        |  |
| <b>BOOK</b>        | F9979212019<br>F99791106                   |

## 9 Colors



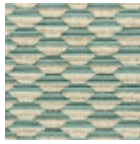
F2798001  
Naturel



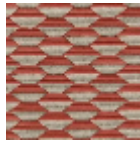
F2798002  
Noir



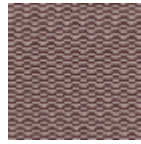
F2798003  
Moka



F2798005  
Céladon



F2798006  
Rouge



F2798007  
Prune



F2798008  
Or



F2798009  
Olive



F2798010  
Indigo