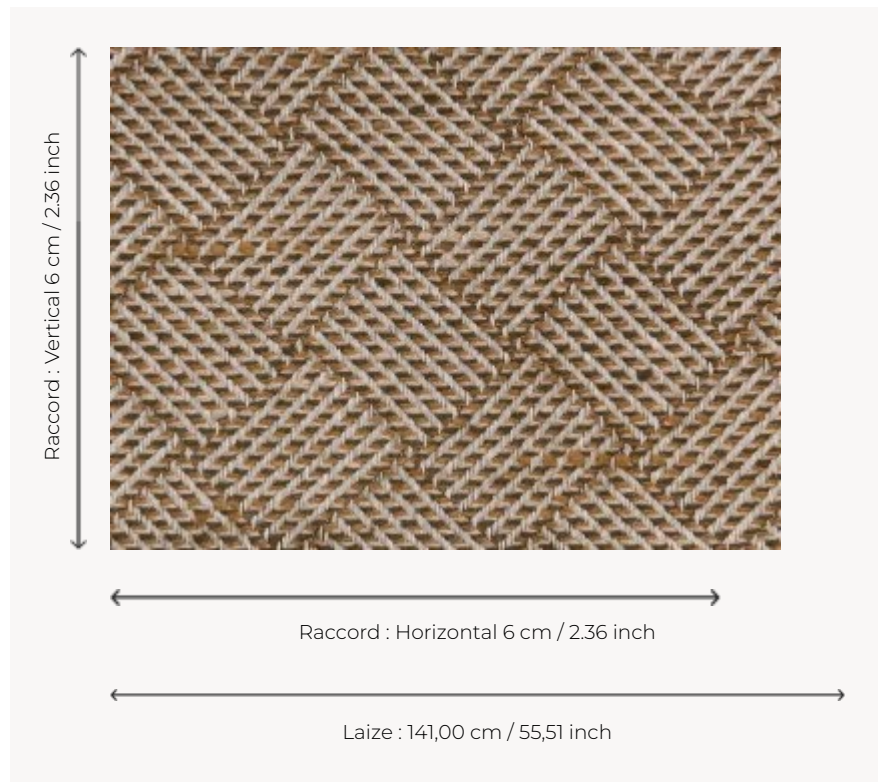



# F2802002 KHIVA

Essential semi-plain presenting a motif of large braiding.

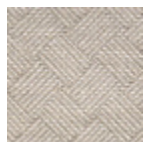
## F2802002 - Chocolat



## Pierre Frey

<b>TYPE</b>	Jacquards
<b>USE</b>	Normal use
<b>MARTINDALE</b>	25.000 T
<b>COMPOSITION</b>	60 % Linen - 40 % Viscose
<b>SALES UNIT</b>	Available per meter/yard
<b>WIDTH</b>	141 cm / 55,51 inch
<b>REPEAT</b>	H: 6 cm - 2,36 inch V: 6 cm - 2,36 inch
<b>WEIGHT</b>	837 gr / ml
<b>CARE</b>	
<b>CERTIFICATIONS</b>	BS5852 Cigarette & match test
<b>NOTES</b>	Woven in Pierre Frey's workshop in northern France. Living Heritage Mill.
<b>BOOK</b>	F99791106

## 5 Colors



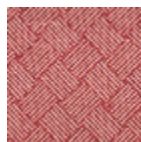
F2802001  
Naturel



F2802002  
Chocolat



F2802003  
Jeans



F2802004  
Rouge



F2802005  
Rose