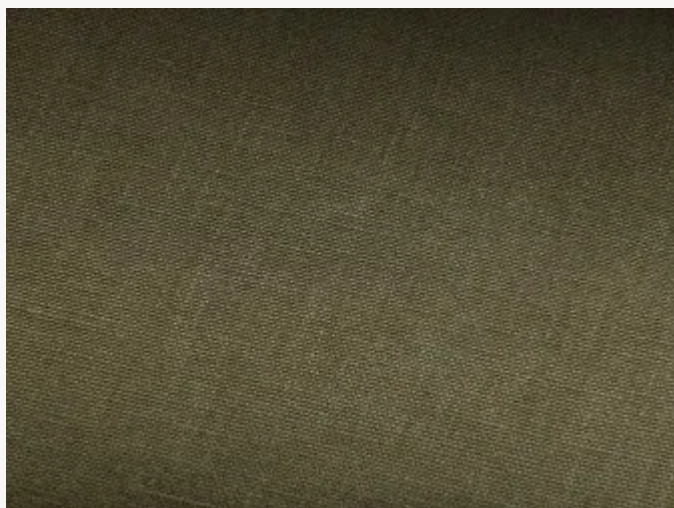




F2919010 DOLINO

This stone-washed linen in a range of 20 colourways of neutrals and muted colors drapes beautifully.
A real must!

F2919010 - Kaki

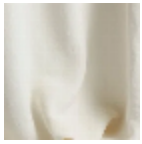


Laize : 143,00 cm / 56,29 inch

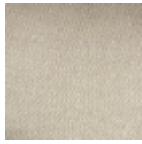
Pierre Frey

| | |
|--------------------|--|
| TYPE | Plains |
| MARTINDALE | 10.000 T |
| COMPOSITION | 100 % Linen |
| SALES UNIT | Available per meter/yard |
| WIDTH | 143 cm / 56,29 inch |
| WEIGHT | 543 gr / ml |
| CARE | |
| NOTES | Can be embossed |
| INFORMATION | Stonewashed look, cutting for approval recommended |

10 Colors



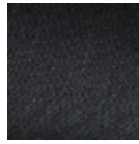
F2919001
Blanc



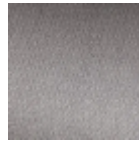
F2919002
Crème



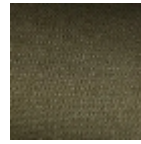
F2919003
Beige



F2919008
Ardoise



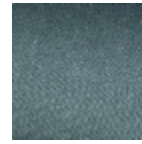
F2919009
Galet



F2919010
Kaki



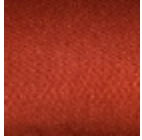
F2919011
Vert de gris



F2919013
Nattier



F2919018
Rose ancien



F2919020
Corail