



F2951002 ANTIGUA

A semi-plain fabric, the latest new release from our weaving mill in northern France, Antigua elegantly combines the sheen of viscose and the rustic appearance of linen. The irregular weave of this fabric gives it an intentional rustic-chic style.

F2951002 - Raphia



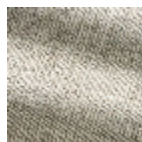
Laize : 139,00 cm / 54,72 inch

Pierre Frey

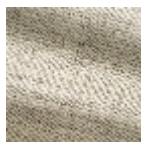
PERFORMANCE	High Rub Test
TYPE	Semi plains
USE	Intensive use
MARTINDALE	30.000 T
COMPOSITION	41 % Viscose - 39 % Linen - 14 % Acrylic - 6 % Polyester
SALES UNIT	Available per meter/yard
WIDTH	139 cm / 54,72 inch
WEIGHT	824 gr / ml
CARE	

NOTES Woven in Pierre Frey's workshop in northern France. Living Heritage Mill.

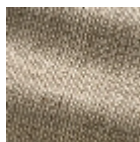
4 Colors



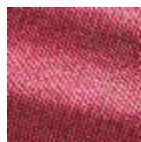
F2951001
Perle



F2951002
Raphia



F2951003
Ficelle



F2951010
Fuchsia