

## F2952002 PAPOU

This multi-coloured narrow stripe with an irregular appearance giving it a hand-woven effect, manufactured in our own weaving mill in France, revisits the universal theme of ethnic stripes.

### F2952002 - Exotique



Raccord : Horizontal 36 cm / 14.17 inch



Laize : 141,00 cm / 55,51 inch

### Pierre Frey

|                    |  |
|--------------------|--|
| <b>PERFORMANCE</b> | High Rub Test                          |
| <b>TYPE</b>        | Jacquards                              |
| <b>USE</b>         | Intensive use                          |
| <b>MARTINDALE</b>  | 35.000 T                               |
| <b>COMPOSITION</b> | 67 % Viscose - 24 % Linen - 9 % Cotton |
| <b>SALES UNIT</b>  | Available per meter/yard               |
| <b>WIDTH</b>       | 141 cm / 55,51 inch                    |
| <b>REPEAT</b>      | H: 36 cm - 14,17 inch                  |
| <b>WEIGHT</b>      | 673 gr / ml                            |
| <b>CARE</b>        |  |

#### NOTES

Woven in Pierre Frey's workshop in northern France. Living Heritage Mill.

## 4 Colors



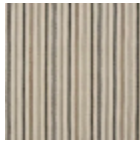
F2952001  
Épice



F2952002  
Exotique



F2952003  
Tropical



F2952004  
Naturel