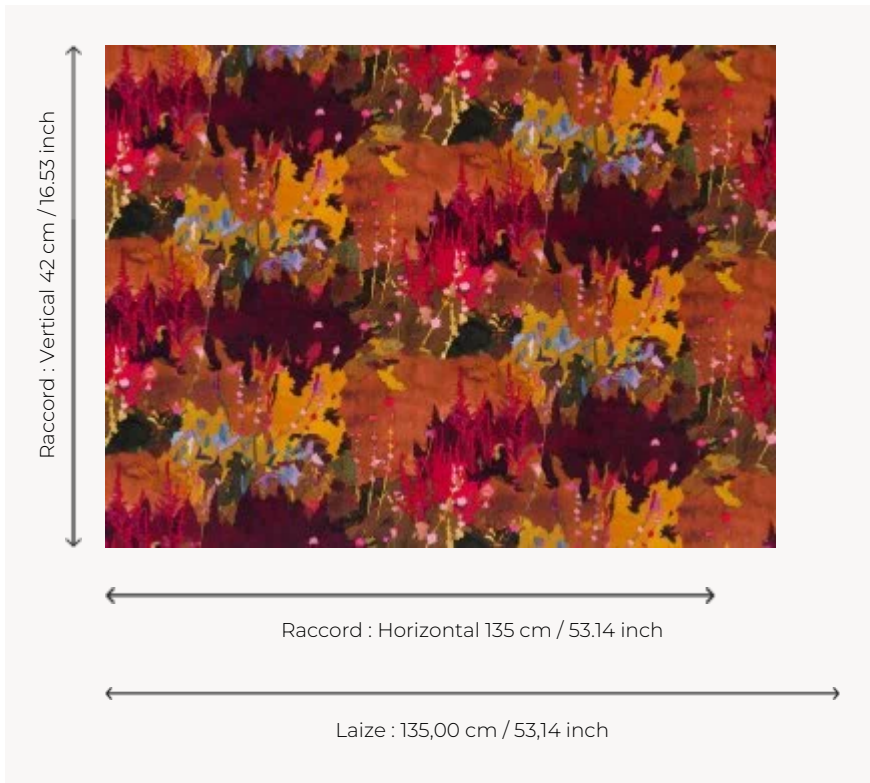


F2983001 UTOPIA

It's a nod to the psychedelic trend in the 60s. These flowers almost reflect the abstraction trend which plays with our retina by the blurred perception of nature and the strong color contrast. This beautiful printed cotton velvet seems to come out of a hallucinogenic dream. We are not far from the atmosphere created by Verner Panton in 1970 with Visiona 2 installation.

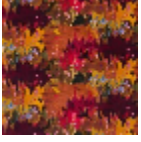
F2983001 - Multicolore



Pierre Frey

TYPE	-
USE	Moderate use
MARTINDALE	10.000 T
COMPOSITION	88 % Cotton - 12 % Polyester
SALES UNIT	Available per meter/yard
WIDTH	135 cm / 53,14 inch
REPEAT	H: 135 cm - 53,14 inch V: 42 cm - 16,53 inch
WEIGHT	567 gr / ml
CARE	
CERTIFICATIONS	NFPA 260-Class 1

1 Colors



F2983001
Multicolore