



F3010002 FIDJI

At once rustic and soft, this semi-plain herringbone will undoubtedly become an essential basic interior design choice.

F3010002 - Crème



Laize : 142,00 cm / 55,90 inch

Pierre Frey

| | |
|-----------------------|-------------------------------------------------------------------------------------------|
| PERFORMANCE | High Rub Test |
| TYPE | Plains |
| USE | Intensive use |
| MARTINDALE | 40.000 T |
| COMPOSITION | 66 % Viscose - 24 % Linen - 10 % Cotton |
| SALES UNIT | Available per meter/yard |
| WIDTH | 142 cm / 55,90 inch |
| WEIGHT | 710 gr / ml |
| CARE | |
| CERTIFICATIONS | BS5852 Cigarette test EN1021-1-2 in conjunction with suitable combustion modified foam |
| NOTES | Woven in Pierre Frey's workshop in northern France.Living Heritage Mill. |
| INFORMATION | Natural fiber irregularity |
| BOOK | F99791502 |

6 Colors



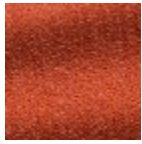
F3010001
Blanc



F3010002
Crème



F3010004
Plume



F3010018
Mangue



F3010019
Corail



F3010026
Océan