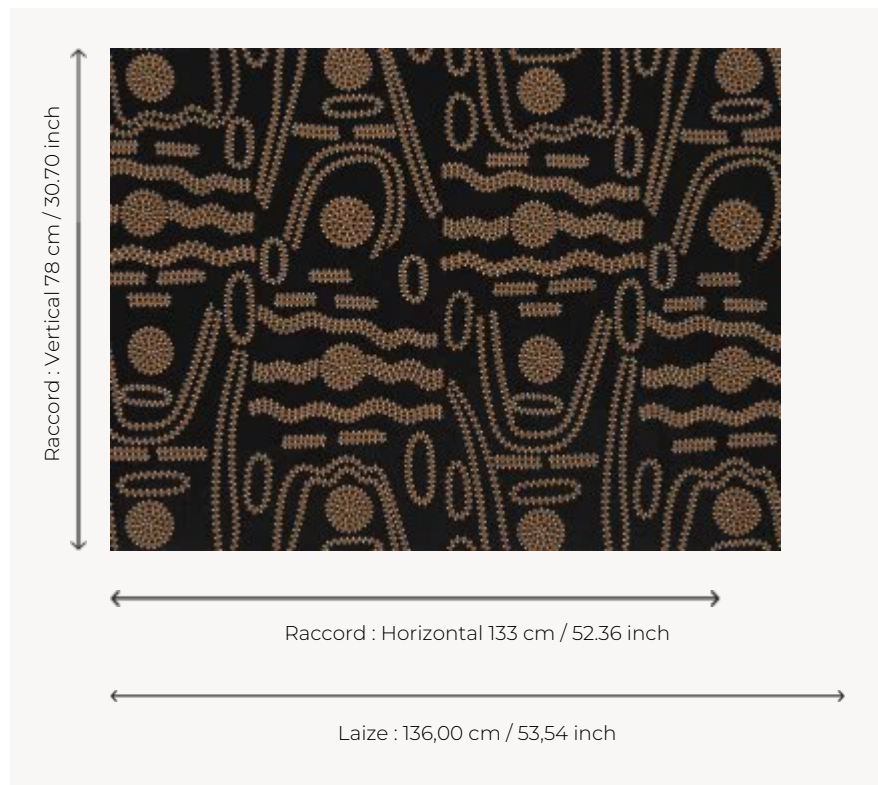


F3021002 TASMANIA

Tasmania is an embroidery on linen made with dots and undulating lines that are motifs very present in Aboriginal Art.

F3021002 - Ebène



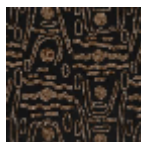
Pierre Frey

TYPE	Embroideries
COMPOSITION	65 % Linen - 20 % Viscose - 15 % Polyester
SALES UNIT	Available per meter/yard
WIDTH	136 cm / 53,54 inch
REPEAT	H: 133 cm - 52,36 inch V: 78 cm - 30,70 inch
WEIGHT	490 gr / ml
CARE	

2 Colors



F3021001
Santal



F3021002
Ebène