



## F3064002 MANIALA

Maniala is a sheer, woven in relief to catch the light which gives a sophisticated effect. Trevira CS polyester fiber.

### F3064002 - Lin



Laize : 320,00 cm / 125,98 inch

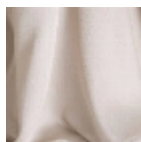
### Pierre Frey

<b>PERFORMANCE</b>	Trevira CS
<b>TYPE</b>	Sheers
<b>USE</b>	Sheers
<b>COMPOSITION</b>	100 % Polyester Fire Retardant
<b>SALES UNIT</b>	Available per meter/yard
<b>WIDTH</b>	320 cm / 125,98 inch
<b>WEIGHT</b>	224 gr / ml
<b>CARE</b>	
<b>CERTIFICATIONS</b>	Fire retardant M1
<b>NOTES</b>	Flame retardant Leaded selvedge
<b>BOOK</b>	F9979212007

## 2 Colors



F3064001  
Blanc



F3064002  
Lin