



# F3070012 GASPARD

This high quality washable plain velvet has a matte finish and its Trevira CS composition means it both looks and feels like cotton. It comes in a wide range of colors, from natural shades to high colour, making it easy to use in any interior.

## F3070012 - Matelot



Laize : 140,00 cm / 55,11 inch

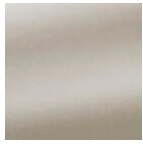
## Pierre Frey

<b>TYPE</b>	-
<b>USE</b>	Intensive use
<b>MARTINDALE</b>	>100.000 T
<b>COMPOSITION</b>	100 % Polyester Flame Retardant
<b>SALES UNIT</b>	Available per meter/yard
<b>WIDTH</b>	140 cm / 55,11 inch
<b>WEIGHT</b>	581 gr / ml
<b>CARE</b>	
<b>CERTIFICATIONS</b>	NFPA 701-Pass BS5852 Cigarette & match test Fire retardant M1 CLASSE UNO NFPA 260-Class 1 CAL TB 117- Pass CRIB 5
<b>NOTES</b>	Can be embossed Flame retardant
<b>BOOK</b>	F99791508 F9979F3070MINI

# 11 Colors



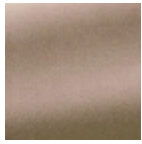
F3070001  
Blanc



F3070003  
Craie



F3070004  
Cassonade



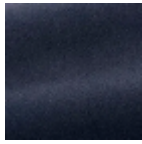
F3070005  
Racine



F3070008  
Plomb



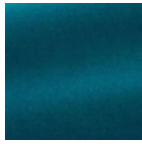
F3070010  
Noir



F3070011  
Charbon



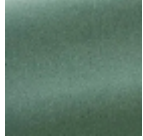
F3070012  
Matelot



F3070014  
Petrole



F3070017  
Argile



F3070018  
Vert de gris