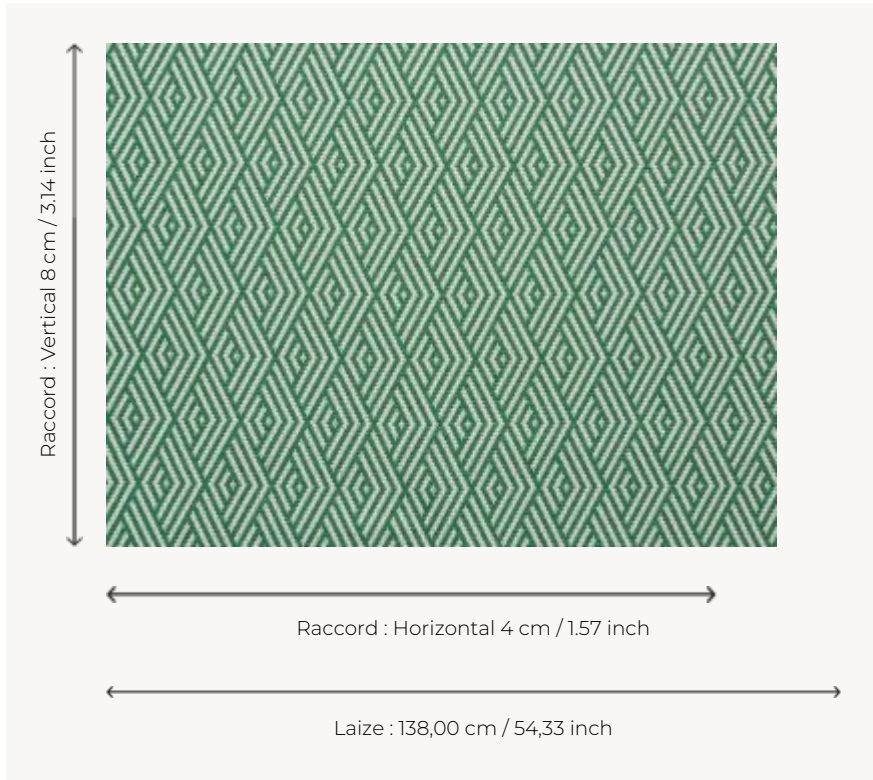


F3074006 MANI

A beautiful allusion to South American culture and its numerous multicolored markets, Mani and its diamond-shaped motifs evokes basket weaving and wickerwork. With its woven straw effect, this weave has been developed to be very easy to clean and suitable for outdoor use. It can thus be used for a variety of purposes. It will be ideal for furniture, cushions and hangings in the home, on the patio or by the pool.

F3074006 - Palmier



Pierre Frey

| | |
|--------------------|--|
| TYPE | Jacquards |
| USE | Intensive use |
| MARTINDALE | > 40.000 T |
| COMPOSITION | 100 % Acrylic Dralon |
| SALES UNIT | Available per meter/yard |
| WIDTH | 138 cm / 54,33 inch |
| REPEAT | H: 4 cm - 1,57 inch V: 8 cm - 3,14 inch |
| WEIGHT | 718 gr / ml |
| CARE | |

NOTES High lightfastness, mold-resistant, stain & water repellent
Woven in Pierre Frey's workshop in northern France. Living Heritage Mill.

INFORMATION For outdoor use, make sure to use appropriate lining materials. Remember to store pads and cushions in a clean, dry place when not in use.

| | |
|-------------|---|
| BOOK | F9979KIT2102 F9979KIT2109 F9979KIT2105 F9979KIT2106 F99791802 F9979F3074MINI F9979KIT2103 F9979KIT2108 F9979KIT2107 F9979KIT2104 F9979KIT2110 F99791 F9979KIT2101 |
|-------------|---|

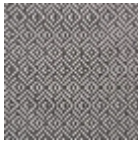
10 Colors



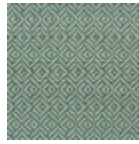
F3074001
Blanc



F3074002
Lin



F3074004
Charbon



F3074005
Argile



F3074006
Palmier



F3074007
Lagon



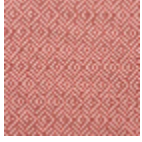
F3074008
Matelot



F3074010
Citron



F3074011
Capucine



F3074012
Corail