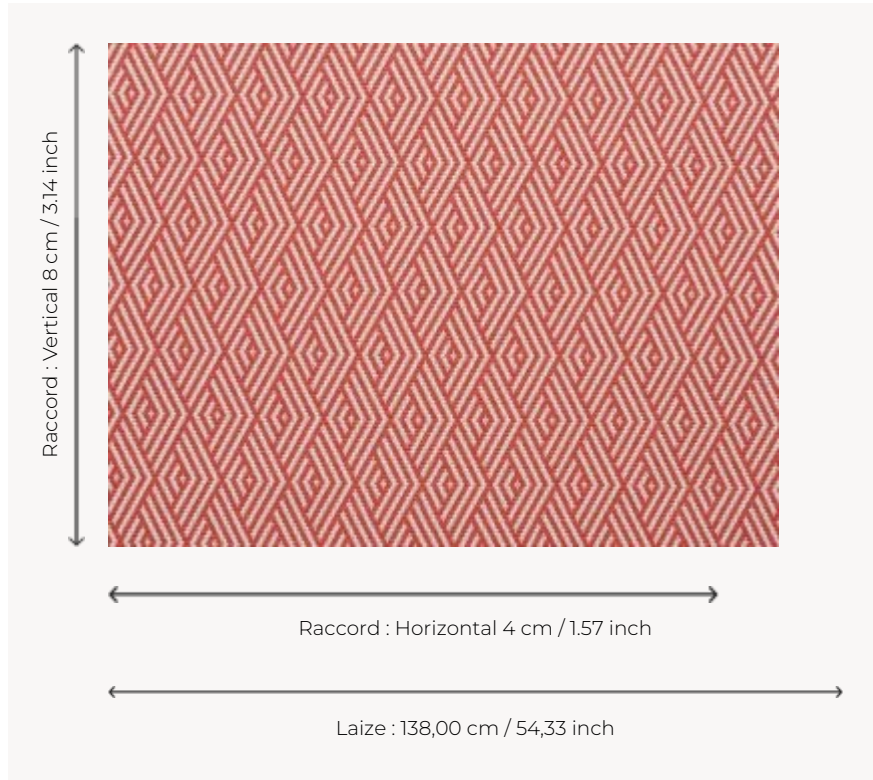



# F3074012 MANI

A beautiful allusion to South American culture and its numerous multicolored markets, Mani and its diamond-shaped motifs evokes basket weaving and wickerwork. With its woven straw effect, this weave has been developed to be very easy to clean and suitable for outdoor use. It can thus be used for a variety of purposes. It will be ideal for furniture, cushions and hangings in the home, on the patio or by the pool.

## F3074012 - Corail



## Pierre Frey

<b>TYPE</b>	Jacquards
<b>USE</b>	Intensive use
<b>MARTINDALE</b>	> 40.000 T
<b>COMPOSITION</b>	100 % Acrylic Dralon
<b>SALES UNIT</b>	Available per meter/yard
<b>WIDTH</b>	138 cm / 54,33 inch
<b>REPEAT</b>	H: 4 cm - 1,57 inch V: 8 cm - 3,14 inch
<b>WEIGHT</b>	718 gr / ml
<b>CARE</b>	

**NOTES** High lightfastness, mold-resistant, stain & water repellent  
Woven in Pierre Frey's workshop in northern France. Living Heritage Mill.

**INFORMATION** For outdoor use, make sure to use appropriate lining materials. Remember to store pads and cushions in a clean, dry place when not in use.

<b>BOOK</b>	F9979KIT2102 F9979KIT2109 F9979KIT2105 F9979KIT2106 F99791802 F9979F3074MINI F9979KIT2103 F9979KIT2108 F9979KIT2107 F9979KIT2104 F9979KIT2110 F99791 F9979KIT2101
-------------	---

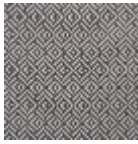
# 10 Colors



F3074001  
Blanc



F3074002  
Lin



F3074004  
Charbon



F3074005  
Argile



F3074006  
Palmier



F3074007  
Lagon



F3074008  
Matelot



F3074010  
Citron



F3074011  
Capucine



F3074012  
Corail