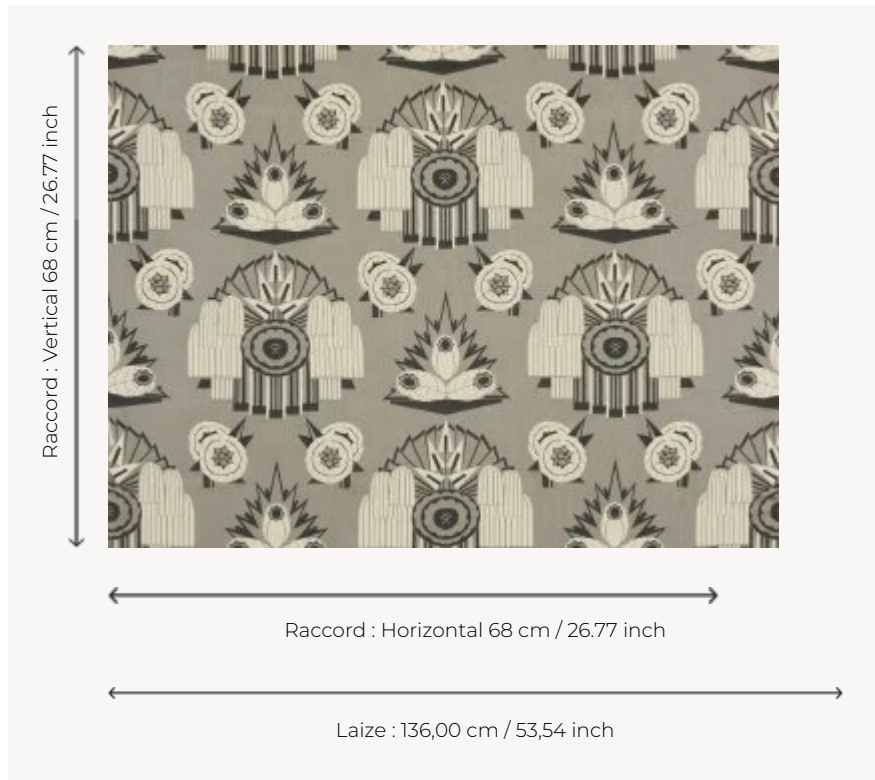


F3094001 LA FEE ELECTRICITE

In 1923, René Prou, Patrick Frey's grandfather, created this pattern for the House of Le Manach. It is characteristic of the enthusiasm for the science of electricity during the period. This craze reached a paroxysm in 1937 with the building of the light and electricity pavilion by Mallet Stevens for the International Exhibition of Arts and Technology in Modern Life. The technique of double-weave jacquard and the black and cream threads create as many contrasts in colors and materials as they do in patterns to express the singular personality of this historical motif.

F3094001 - Truffe



Pierre Frey

TYPE	Jacquards
COMPOSITION	59 % Cotton - 35 % Viscose - 6 % Polyamide
SALES UNIT	Available per meter/yard
WIDTH	136 cm / 53,54 inch
REPEAT	H: 68 cm - 26,77 inch V: 68 cm - 26,77 inch
WEIGHT	685 gr / ml
CARE	
NOTES	Woven in Pierre Frey's workshop in northern France. Living Heritage Mill.
BOOK	F99791601

1 Colors



F3094001
Truffe