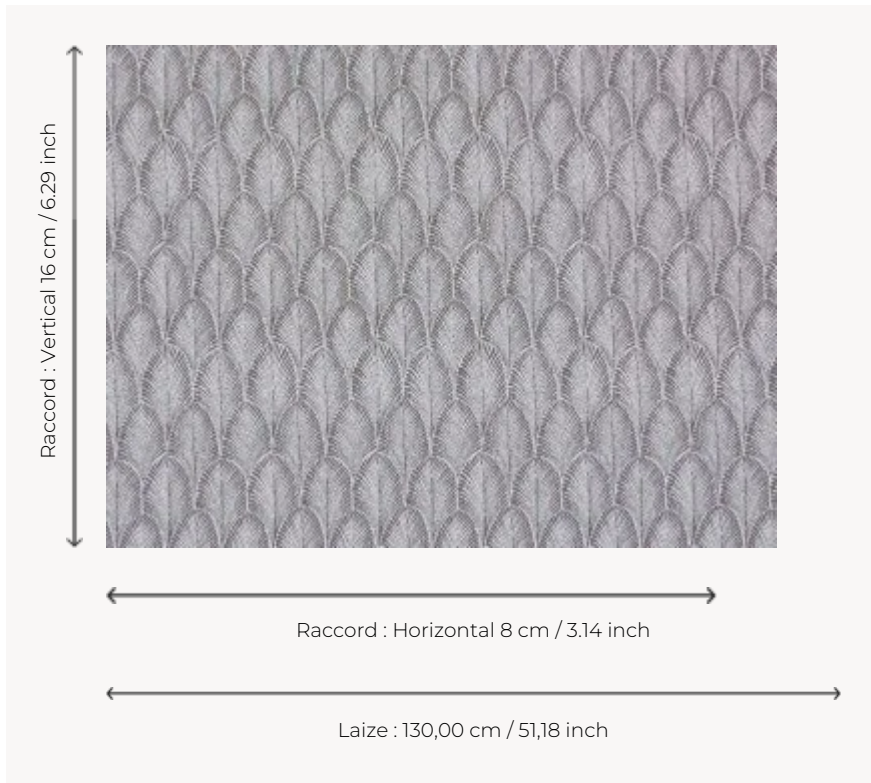


## F3095003 PALMETTE

This Trevira CS jacquard in refined colors presents an all-over pattern of iridescent palm leaves. It echoes the marvelous dresses of the twenties. With an eye to meeting the fire safety requirements of certain markets, Maison Pierre Frey offers several models in the Charleston collection that are woven with high-quality, flame-resistant polyester fibers and threads.

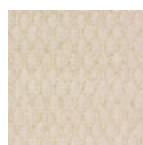
### F3095003 - Galet



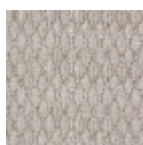
### Pierre Frey

<b>PERFORMANCE</b>	Trevira CS
<b>TYPE</b>	Jacquards
<b>USE</b>	Intensive use
<b>MARTINDALE</b>	25.000 T
<b>COMPOSITION</b>	100 % Polyester Fire Retardant
<b>SALES UNIT</b>	Available per meter/yard
<b>WIDTH</b>	130 cm / 51,18 inch
<b>REPEAT</b>	H: 8 cm - 3,14 inch V: 16 cm - 6,29 inch
<b>WEIGHT</b>	455 gr / ml
<b>CARE</b>	
<b>CERTIFICATIONS</b>	BS5852 Cigarette & match test Fire retardant M1 NFPA 260-Class 1 CAL TB 117- Pass
<b>NOTES</b>	Reversible Flame retardant
<b>BOOK</b>	F99791601 F99791604

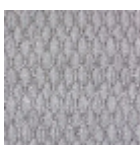
## 5 Colors



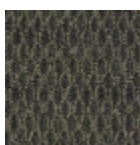
F3095001  
Poudre



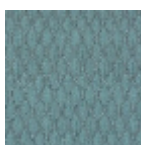
F3095002  
Raphia



F3095003  
Galet



F3095004  
Corbeau



F3095006  
Fjord