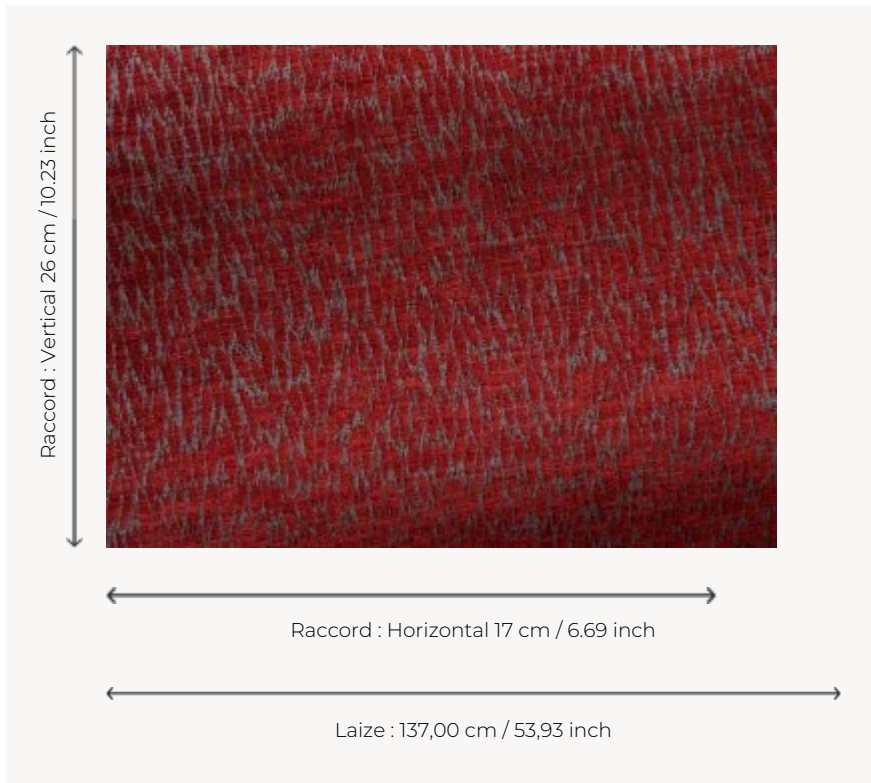




## F3115023 COLETTE

Tone-on-tone fabric with a tiny feather pattern in various colors. Very high-quality chenille thread is used for the weft. In addition to its soft, comfortable feel and outstanding resistance, the chenille thread reacts to weaving by coiling and adds a wealth of highlights to the colors available for this model.

### F3115023 - Garance



### Pierre Frey

<b>PERFORMANCE</b>	High Rub Test
<b>TYPE</b>	-
<b>USE</b>	Intensive use
<b>MARTINDALE</b>	30.000 T
<b>COMPOSITION</b>	56 % Cotton - 44 % Viscose
<b>SALES UNIT</b>	Available per meter/yard
<b>WIDTH</b>	137 cm / 53,93 inch
<b>REPEAT</b>	H: 17 cm - 6,69 inch V: 26 cm - 10,23 inch
<b>WEIGHT</b>	626 gr / ml
<b>CARE</b>	
<b>CERTIFICATIONS</b>	BS5852 Cigarette test
<b>NOTES</b>	Woven in Pierre Frey's workshop in northern France. Living Heritage Mill.
<b>BOOK</b>	F99791601

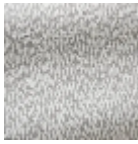
## 12 Colors



F3115001  
Crème



F3115002  
Ficelle



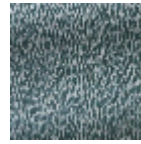
F3115003  
Grège



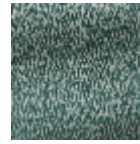
F3115004  
Galet



F3115006  
Granit



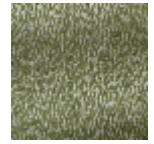
F3115009  
Pétrole



F3115010  
Canard



F3115012  
Lichen



F3115013  
Pois cassé



F3115020  
Érable



F3115021  
Raisin



F3115023  
Garance