



F3128027 CRAFT

A sublime fabric in heavy linen, the 'Craft' model features all the sophistication expected from this exceptional material in a 'vintage' treatment for a stylishly bohemian look. Available in a broad range of more than thirty powdery shades, it adds a touch of pastel color that blends perfectly into a subtle decorative scheme. The fabric also plays on contrast. The irregular linen treads add verve and a distinctive style. But it is also supple and comfortable thanks to a 'stonewashed' treatment that gives it a patina and softens its movement. Exceptional hold, stability and remarkable hand and drape: this linen has all the advantages and is equally beautiful as curtains or for seating. Since the fabric is piece-dyed, then faded, we cannot guarantee absolute matching from one color bath to another.

F3128027 - Orchidée



Laize : 130,00 cm / 51,18 inch

Pierre Frey

PERFORMANCE	High Rub Test
TYPE	Plains
USE	Moderate use
MARTINDALE	30.000 T
COMPOSITION	90 % Linen - 10 % Polyamide
SALES UNIT	Available per meter/yard
WIDTH	130 cm / 51,18 inch
WEIGHT	639 gr / ml
CARE	
CERTIFICATIONS	EN1021-1-2 in conjunction with suitable combustion modified foam NFPA 260-Class 1
INFORMATION	Stonewashed look, cutting for approval recommended
BOOK	F99791611

31 Colors



F3128001
Coton



F3128002
Meringue



F3128003
Sable



F3128004
Savane



F3128005
Lin



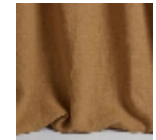
F3128006
Taupe



F3128007
Ecorces



F3128008
Cannelle



F3128009
Camel



F3128010
Curcuma



F3128011
Mimosa



F3128012
Perle



F3128013
Souris



F3128014
Étain



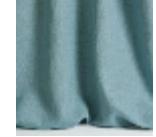
F3128015
Ardoise



F3128016
Indigo



F3128017
Orage



F3128018
Ciel



F3128019
Opaline



F3128020
Céladon



F3128021
Amande



F3128022
Chardon



F3128023
Glycine



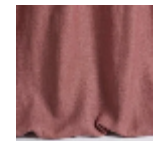
F3128024
Poudre



F3128025
Pétale



F3128026
Rose ancien



F3128027
Orchidée



F3128028
Pourpre



F3128029
Corail



F3128030
Brique



F3128031
Abricot