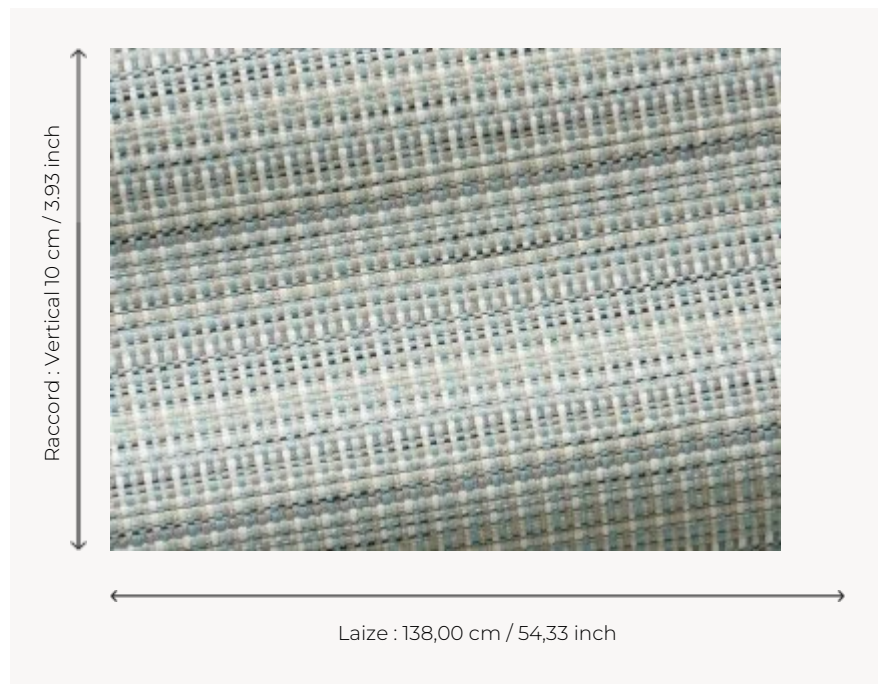



F3129002 DOMINICA

A model of the Outdoor collection 'Bayamo', offering a broad range of material effects in a choice of contemporary pastel shades.

F3129002 - Céleste



Pierre Frey

| | |
|--------------------|---|
| TYPE | Jacquards |
| USE | Intensive use |
| MARTINDALE | 40.000 T |
| COMPOSITION | 100 % Acrylic Dralon |
| SALES UNIT | Available per meter/yard |
| WIDTH | 138 cm / 54,33 inch |
| REPEAT | V: 10 cm - 3,93 inch |
| WEIGHT | 828 gr / ml |
| CARE |  |

NOTES

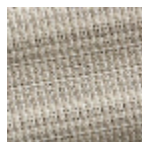
High lightfastness, mold-resistant, stain & water repellent
Woven in Pierre Frey's workshop in northern France. Living Heritage Mill.
Stain & water repellent

INFORMATION

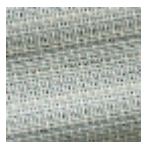
Reinforced stitching recommended to avoid fraying at seams
For outdoor use, make sure to use appropriate lining materials.
Remember to store pads and cushions in a clean, dry place when not in use.

BOOK F99791613

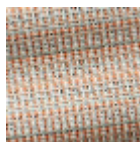
5 Colors



F3129001
Naturel



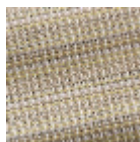
F3129002
Céleste



F3129003
Goyave



F3129004
Caraïbes



F3129005
Mimosa