

## F3229002 ANOKI

This fully embroidered, polychrome geometric stripe plays on different rhythms to create a beautiful, modern decorative effect.

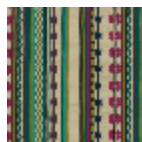
### F3229002 - Botanica



### Pierre Frey

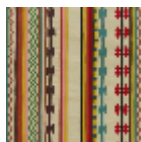
<b>TYPE</b>	Embroideries
<b>USE</b>	Curtain
<b>COMPOSITION</b>	65 % Wool - 35 % Cotton
<b>SALES UNIT</b>	Available per meter/yard
<b>WIDTH</b>	130 cm / 51,18 inch
<b>REPEAT</b>	H: 64 cm - 25,19 inch V: 10 cm - 3,93 inch Free match
<b>WEIGHT</b>	845 gr / ml
<b>CARE</b>	
<b>NOTES</b>	Handcrafted embroidery
<b>INFORMATION</b>	Embroidery 100% wool
<b>BOOK</b>	F99791802

## 2 Colors



F3229001

Pulsation



F3229002

Botanica