

## F3370011 BALTAZAR

Beautiful plain velvet cut in Trevira CS with a delicate shine reminiscent of the silk velvet from which it draws its inspiration. Available in 27 colors, in a resolutely modern range, its soft and supple hand makes it equally suitable for use as upholstery or drapery.

### F3370011 - Aloe vera



Laize : 140,00 cm / 55,11 inch

### Pierre Frey

|                       |   |
|-----------------------|---|
| <b>TYPE</b>           | -   |
| <b>USE</b>            | Intensive use   |
| <b>MARTINDALE</b>     | >100.000 T  |
| <b>COMPOSITION</b>    | 100 % Polyester Fire Retardant  |
| <b>SALES UNIT</b>     | Available per meter/yard  |
| <b>WIDTH</b>          | 140 cm / 55,11 inch   |
| <b>WEIGHT</b>         | 651 gr / ml   |
| <b>CARE</b>           |    |
| <b>CERTIFICATIONS</b> | NFPA 701-Pass<br>BS5852 Cigarette & match test<br>Fire retardant M1<br>CLASSE UNO<br>NFPA 260-Class 1<br>CAL TB 117- Pass<br>CRIB 5 |
| <b>NOTES</b>          | Can be embossed<br>Flame retardant  |
| <b>BOOK</b>           | F99791902<br>F9979F3370MINI   |

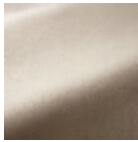
## 27 Colors



F3370001  
Meringue



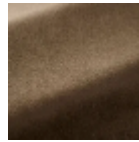
F3370002  
Gingembre



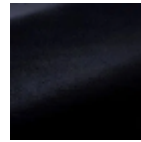
F3370003  
Hérisson



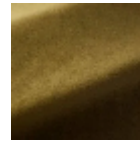
F3370004  
Koala



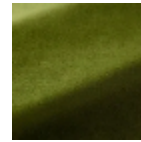
F3370005  
Taupe



F3370006  
Noir



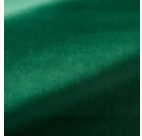
F3370007  
Kaki



F3370008  
Olive



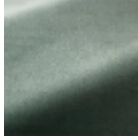
F3370009  
Guacamole



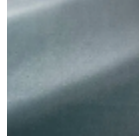
F3370010  
Impérial



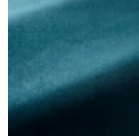
F3370011  
Aloe vera



F3370012  
Céladon



F3370013  
Aqua



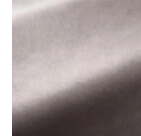
F3370014  
Pétrole



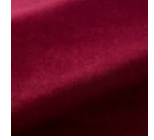
F3370015  
Paon



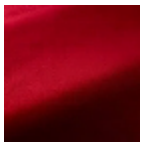
F3370016  
Lapis lazuli



F3370017  
Perle



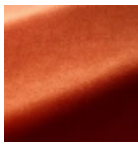
F3370018  
Lie de vin



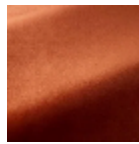
F3370019  
Cerise



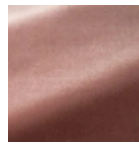
F3370020  
Safran



F3370021  
Abricot



F3370022  
Terracotta



F3370023  
Poudre



F3370024  
Flamant rose



F3370025  
Cannelle



F3370026  
Ocre



F3370027  
Canari