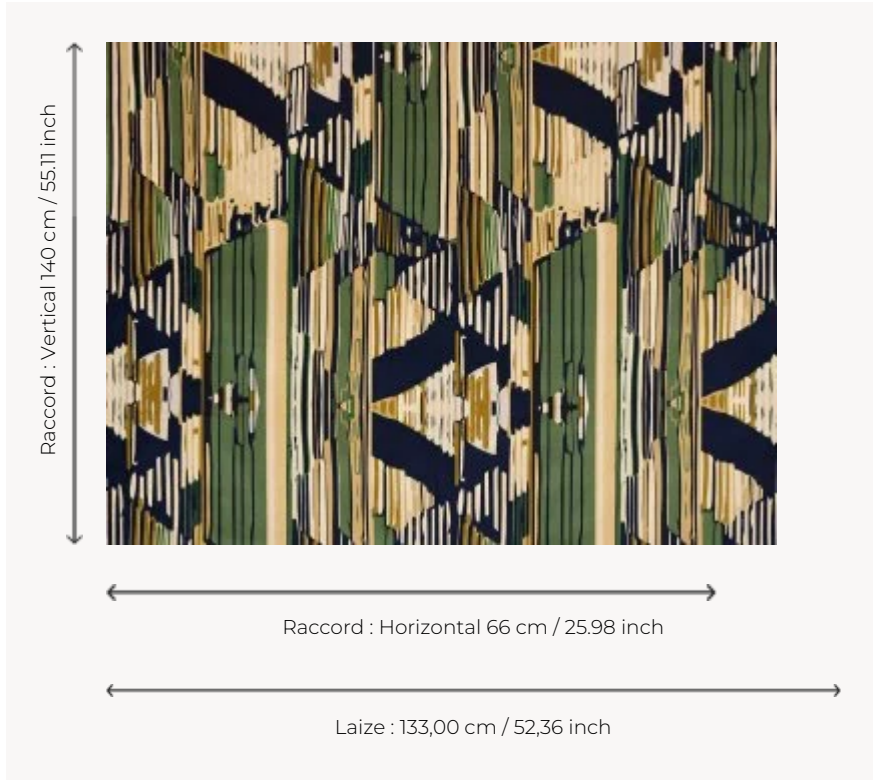


F3373002 PALLA

Laura Gonzalez has created the "Palla" motif, a realistic reinterpretation of Ancient Greek drapes. Eleven shades of color trace geometric undulations and vertical movements on printed cotton. Available in several colors with tourmaline and fig tones.

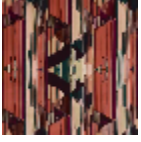
F3373002 - Tourmaline



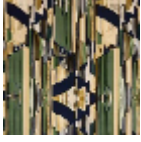
Pierre Frey

TYPE	-
ARTIST	Laura Gonzalez
USE	Moderate use
MARTINDALE	10.000 T
COMPOSITION	66 % Cotton - 31 % Viscose - 3 % Polyester
SALES UNIT	Available per meter/yard
WIDTH	133 cm / 52,36 inch
REPEAT	H: 66 cm - 25,98 inch V: 140 cm - 55,11 inch Straight repeat
WEIGHT	625 gr / m ²
CARE	
INFORMATION	Patina with use Cotton and viscose pile

2 Colors



F3373001
Figue



F3373002
Tourmaline