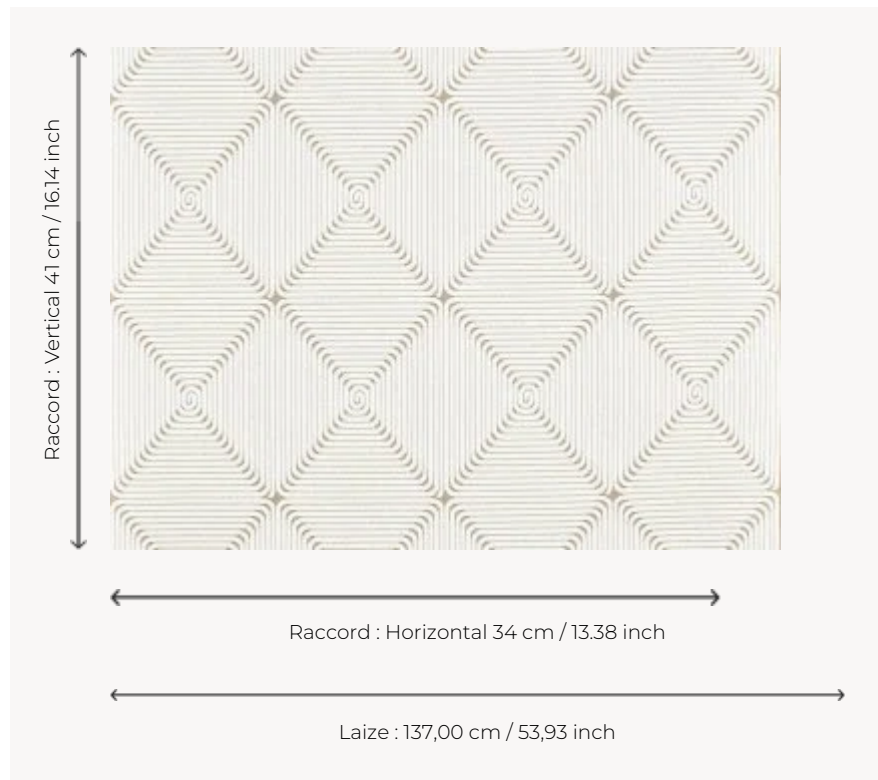


## F3376001 CORDAGE

Starting in 1987, Christian Astuguevieille began to design sculpture and furniture in rope. Matter meets meaning when he rolls a rope and sculpts a chair from it; it's also a story of colors, volume and dreams when he paints and coats this creation. He is still fascinated by this process and continues to develop it. The CORDAGE fabric illustrates this work and the artist's research with the development of a weave with a surprising volume that closely resembles the original works and the rope that the artist particularly favors. Here, rope seems to wind around the fabric, forming four interlaced loops.

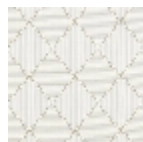
### F3376001 - Crème



### Pierre Frey

<b>PERFORMANCE</b>	High Rub Test
<b>TYPE</b>	Jacquards
<b>ARTIST</b>	Christian Astuguevieille
<b>USE</b>	Normal use
<b>MARTINDALE</b>	> 40.000 T
<b>COMPOSITION</b>	80 % Cotton - 20 % Linen
<b>SALES UNIT</b>	Available per meter/yard
<b>WIDTH</b>	137 cm / 53,93 inch
<b>REPEAT</b>	H: 34 cm - 13,38 inch V: 41 cm - 16,14 inch Straight repeat
<b>WEIGHT</b>	757 gr / ml
<b>CARE</b>	
<b>CERTIFICATIONS</b>	NFPA 260-Class 1
<b>NOTES</b>	Woven in Pierre Frey's workshop in northern France. Living Heritage Mill.
<b>INFORMATION</b>	Reinforced stitching recommended to avoid fraying at seams

# 1 Colors



F3376001  
Crème