



# F3398001 BATZ

In a one- or two-color version, this sturdy fabric has a surprising aspect that recalls a thick cotton.  
High anti-stain performance.

## F3398001 - Écru



Laize : 136,00 cm / 53,54 inch

## Pierre Frey

<b>TYPE</b>	Semi plains
<b>USE</b>	Normal use
<b>MARTINDALE</b>	40.000 T
<b>COMPOSITION</b>	100 % Acrylic Dralon
<b>SALES UNIT</b>	Available per meter/yard
<b>WIDTH</b>	136 cm / 53,54 inch
<b>WEIGHT</b>	802 gr / ml
<b>CARE</b>	

---

<b>CERTIFICATIONS</b>	NFPA 260-Class 1
-----------------------	------------------

---

<b>NOTES</b>	High lightfastness, mold-resistant, stain & water repellent Woven in Pierre Frey's workshop in northern France. Living Heritage Mill.
--------------	--

---

<b>INFORMATION</b>	Reinforced stitching recommended to avoid fraying at seams For outdoor use, make sure to use appropriate lining materials. Remember to store pads and cushions in a clean, dry place when not in use.
--------------------	---

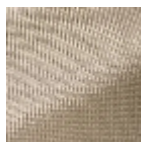
---

<b>BOOK</b>	F99791906
-------------	-----------

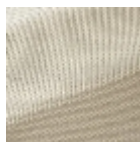
### 3 Colors



F3398001  
Écru



F3398002  
Lin



F3398003  
Sable